



# WILKINSBURG STAMP CLUB NEWS

**Volume 20, Issue 4, November 2021**

*Wilkinsburg Stamp Club is a member of APS #12293*

[www.wilkinsburgstampclub.com](http://www.wilkinsburgstampclub.com)

Meeting Schedule: **See Below!!!!!!**

**WILKPEX 2022** - Friday April 22<sup>nd</sup> 11 AM – 5 PM; Saturday April 23<sup>rd</sup> 10 AM – 4 PM – Holiday Park Fire Department, Plum PA.

## WSC Meeting Schedule

The October 30<sup>th</sup> meeting will again be at the Westinghouse Lodge in Forest Hills. We do not know if Churchill will let us back into the Borough Building again in 2021, and we will discuss this at the next meeting. It is located at 799 Barclay Ave 15221, just off of Greensburg Pike in Forest Hills. It is a short walk from the parking lot to the building. Directions are at the end of the newsletter. See you there!

## Wilkinsburg Stamp Club News

- The Wilkins Township Bicentennial Parade was on September 18<sup>th</sup>, and we have close-up pictures of Andy:



- Circuits – The club is still getting circuits and if you want to get involved please contact Danielle! We also have circuits available at our meetings! Take a look! If you are interested in creating a circuit book please ask Danielle for more information.
- Danielle will be planning trips to APS on Fridays now that they are open, so if you're interested please let her know!



## Philatelic News

- The USPS 2021 stamps have all been released and the initial information about 2022 US stamps should be released in mid-November so stay tuned!
- The United Nations is releasing a stamp to celebrate World Toilet Day on November 19<sup>th</sup>:



This day is designed to shine a light on everyone in the world who does not have access to adequate or safe toilets. People are still dying from preventable diseases such as cholera, dysentery and hepatitis. The situation is much worse in the refugee camps all over the world.

## Member Information

- We are looking to get our membership records and contact info "up-to-date", so can you please send your current address, phone number and email address to Deb Foltyn? This is vital if you haven't been to a meeting in a while and/or have moved from the Pittsburgh area. **It is also key to contacting all members in case the meetings change!** You can also mail it to the club's PO box! You know, using a stamp?

- Both the Website and Newsletter were awarded Star Route Medals from the APS and we received valuable feedback to help improve both. This information will be shared at our next meeting.
- Gene asked that the following be placed into the newsletter:

Our 1961, 1965 and 1966 Souvenir Sheets For Sale Now:

A few years ago Mr. John Hotchner verified that there are THREE DIFFERENT VERSIONS of our 1961 souvenir sheet – the pictures are all the same, but the headings are different on each one: Type I – Two BLACK lines at the Top; Type II – Three lines at the top; Type III – Two lines at the top but the top line is red and the second line is black.

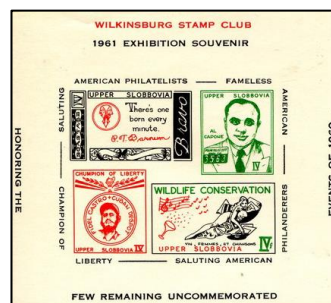
When I took over answering the club’s mail orders for our cachets and souvenir sheets about 25 years ago I started a “wanted” list for the 1961, ‘65 and ‘66 sheets for our annual buyers. It took me about seven years to find enough sheets to fulfill that “wanted” list for our regular buyers.

Three of us have been buying the sheets from those 3 years – Michael Moticha, our man in Apple Valley CA (I am not kidding), who visited many stamps shows in CA these past few years; Danielle Weaver who visits the Match Factory (APS) about 4 times a year; myself, who bids online and getting the sheets for no more than \$8 each – and now we have a small supply of each sheet.

WE DO NOT HAVE TYPES I AND III OF THE 1961 SHEET!!!! I have seen these go for at least \$25 on eBay. We only have the “common” version – Type II.

I think it is fair to charge club members Lou’s favorite number - \$13 – for the common 1961 sheet and at least \$10 each for the 1965 and 1966 sheets. Then, if we still have some left for WILKPEX 2022 we will ask \$15 for each one from non-members.

No phone calls or emails please. Send a SASE with a “stiffer” and check payable to the Wilkinsburg Stamp Club to Gene Bujdos, PO Box 5649, Pittsburgh PA 15207.



## Collector's Corner

### USPS Rate Increases –

The 1<sup>st</sup> class postage rate went from 55 cents per ounce to 58 cents on 8/29/21. As article by Bill McAllister in Linn's (10/4/21) says the USPS plans to increase rates again in July 2022, and then starting in 2023 boosting the prices twice a year, warning that "the increases may be steep".

As any collector of US stamps knows, the price of US stamps (1<sup>st</sup> class, 1 ounce) stayed low for the first 105 years of the service. Wikipedia has a chart; here are some highlights:

7/1/19 – 2 cents, 7/16/32 – 3 cents, 8/1/58 – 4 cents

1/7/63 – 5 cents, 1/7/68 – 6 cents

5/16/71 – 8 cents – This is when the US Post Office became the 'independent' agency known as the US Postal Service. Coincidence?

Between 1971 and 2021 the price increased by 50 cents (compare this to 1919 – 1971 – a total increase of 6 cents). Sometimes USPS knew an increase was coming but not how much so they issued the "letter" and "make-up" stamps:



In 2007 the first "Forever" stamps were issued – if a price increase came it would cost more to buy them but any "Forever Stamp", no matter when issued or the initial price, could be used to mail a letter.



The only time recently that the price went down was in 2016, when a "temporary" increase was ruled to be just that – temporary.

Slower service as well as these higher prices have reduced the amount of mail that the USPS is carrying. It is also stifling the package business, which had grown with the rise of online shopping. Stay tuned to what's next for the USPS.

## Wilkinsburg Stamp Club Information:

Meetings – **TEMP** – 3<sup>rd</sup> and 5<sup>th</sup> Sunday of each month. Doors open at 12:30 PM and meetings start at 2:00 PM.

Forest Hills/Westinghouse Lodge, 799 Barclay Ave, Forest Hills PA 15221

*All are welcome! Free admission! Free snacks! Stamps! Lively discussions!*

## WILKPEX – Our Annual Stamp Show

Friday April 22<sup>nd</sup> 11 AM – 5 PM; Saturday April 23<sup>rd</sup> 10 AM – 4 PM – Holiday Park Fire Hall, Plum PA.

### Officers:

President:	Andy Novotny	( <a href="mailto:novoand@hotmail.com">novoand@hotmail.com</a> )
Vice President:	Laura Kaczynski	( <a href="mailto:laurakac13@verizon.net">laurakac13@verizon.net</a> )
Treasurer:	Danielle Weaver	( <a href="mailto:dmm742000@yahoo.com">dmm742000@yahoo.com</a> )
Mailings:	Stevan Cady	( <a href="mailto:stevanw2020@gmail.com">stevanw2020@gmail.com</a> )
Secretary/Newsletter Editor:	Maureen McKeever	( <a href="mailto:maurmomck@gmail.com">maurmomck@gmail.com</a> )
Web Tech:	Deb Foltyn	( <a href="mailto:quest4moos@msn.com">quest4moos@msn.com</a> )

WSC, PO Box 10552, Pittsburgh PA 15235

### Newsletter:

Original articles for the newsletter can be submitted from any member to Maureen at a meeting or emailed to her (see above) or via regular mail:

Maureen McKeever, 118 Larchwood Drive, Turtle Creek PA 15145.

Club members will be mailed a black and white copy of the newsletter each month. Anyone can request a color copy to be delivered at a meeting, but please let Danielle know ahead of time.



## DIRECTIONS AND MAP TO THE FOREST HILLS WESTINGHOUSE LODGE

- (1) From the North: Take I-79 South to Parkway West (Rt. 279). Travel East following signs marked "Rt. 376 Monroeville." Exit the Parkway at the Greensburg Pike exit. At first traffic light, turn left onto Greensburg Pike. Follow Greensburg Pike about two miles. Turn right onto Perry Street after passing yellow brick school. Turn right into the Lodge parking lot.
- (2) From the East: Take the PA Turnpike West to the Monroeville exit. Get on the Parkway East (Rt. 376) heading west toward Pittsburgh. Exit at the Churchill exit. Travel straight ahead (no turns) and at the second traffic light, turn left onto Graham Blvd. Follow Graham to stop sign; turn left onto the Greensburg Pike. Then follow the directions from (1) above.
- (3) From the West: Travel the Parkway West (Rt. 279) toward Pittsburgh and follow directions from (1) above.
- (4) From the South: Take I-79 North, exiting onto the Parkway West (Rt. 279) traveling toward Pittsburgh. Follow directions from (1) above.

