



WILKINSBURG STAMP CLUB NEWSLETTER

Meets 2nd and 4th Sundays

November 1990

Box 8711, Wilkinsburg, PA 15221

A. P. S Chapter 1214

About thirty people were to have attended the Annual Dinner at the SubAlpine Italian Club in Turtle Creek, Pa. on Saturday evening. Paul McCaffery was the organizer and Master-of-Ceremonies. I am sure he did a good job, as he usually does.

As noted in last month's newsletter, due to the fact that the Bloomfield Moose was no longer available for rent by anyone because it was sold to the West Penn Hospital, we were forced to move our show to a different location. After a summer of searching, and with not too many places or dates available, we just about HAD TO settle on the dates of April 6 & 7, and the location of the OLYMPIA HALL at 1575 Electric Ave. in East Pittsburgh, Pa. We really did not have many places or dates to pick from. It was almost IMPOSSIBLE to have our show the third week-end in April, no matter what it says in the by-laws. These by-laws will have to be changed. Yes, we are going to lose some dealers because the Columbus, Ohio show is the same week-end, but that's the way it is, and we have to make the most of this situation. It was in the best interest of the WILKINSBURG STAMP CLUB that this date and location were decided upon, so, as a group, we better get our act together, quit moaning, and move on.

At this time, the cachet committee is thinking of honoring the 20th anniversary of "The First Night World Series Baseball Game" once we get it cleared from the Pirates. Any ideas for the cachet using that idea? Or, does anyone have a better suggestion? Last chance. Time is running out soon.

Since Christmas is less than 8 weeks away, it is probably a good time to remind members that we have ten copies of the Keystone Federation's "Pa. ON STAMPS" albums for sale at \$8.00 each. These are great for any age beginner or advanced collector. Out of state members can write to our PO Box if interested.

Lou Yagle has a dozen copies of a new U.S. album published by the Fulton Publishing Co. Retail price is \$35. WSC members' price: \$23.30. Loose leaf, heavy duty dark blue binder, up to date, free supplement for new issues. See Lou.

The following article is from member George Gatnarek:

"Many years ago an uncle of mine who lived in Czechoslovakia and I would exchange stamps since we were stamp collectors. Eight years ago my uncle died. All correspondence ceased. Years went by. Early this year I received a letter from my uncle's grandson who is learning English and asked if I would correspond with him, that it may help him learn to write English better. So I did. I have learned that my cousin has taken over his father's stamp collection and we are now exchanging stamps. I feel blessed when I look through my Czech collection." (Thanks, George.)

The 1991 stamp program, which now contains more than 112 new designs, most of them commemoratives, will grow even larger, due to the rate increase due to go into effect Feb. 3, 1991. Then, a stamp for every rate in every classification would take at least 147 new denominations. The popular transportation coils will be expanded, not discontinued.



WILKINSBURG STAMP CLUB NEWSLETTER

Meets 2nd and 4th Sundays

December 1990

Box 8711, Wilkinsburg, PA 15221

A. P. S Chapter 1214

Harold Cline, our Treasurer, was given the "MAN OF THE YEAR" award at the Annual Dinner last month. And quite deservedly, I might add. In addition to his regular duties as the club's Treasurer, Harold and his wife Helen have done a great job on the club's annual Show Booklet for the past six years. Congratulations, and thanks Harold. And Helen.

Charlie Schwab will have some stamps of interest to those of you looking to fill spaces in your U.S. album for the years 1928-48, including plate blocks, at his AUCTION TABLE this Sunday. See Charlie and place a bid, or three.

Lou Yagle will have the 1991 Harris and Scott pocket check list catalogues at his table this Sunday. They retail for \$5.95 each but are available to WSC members for \$3.97. Lou also will have many old mint U.S. stamps that you can buy at 10% off face. He will also have the Federation's "Pa. on Stamps" album for sale at \$8.00.

The club Treasurer reports that his records indicate the following 14 members have not paid their dues for the 7-1-90 to 6-30-91 year: #46 Edwin C. Clemm, #106 Milton Stein, #150 Mary Lou McHenry, #163 Edward R. Kooser Sr., #181 Michael DeBlasio, #183 Bill Kust, #193 Earl S. Wilson, #200 Adam Krouskop, #205 Daniel Hirschfield, #210 Ian MacLellan, #211 Greg MacLellan, #219 George S. Gavula, #225 Matt Andrew Reimaley, and #228 Erin R. Remaley.

We sincerely hope you will renew your membership in one of Pa.'s largest stamp clubs but we have no alternative except to remove your name from our roster unless we receive your payment within 30 days. If you have any questions, please call Harold E. Cline at 371-3976.

Sorry to report the death of WSC member Eula Ortman. She died the first week of November.

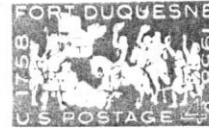
The Keystone Federation of Stamp Clubs, of which we are a member, will be holding their FIRST ANNUAL STAMP SHOW on May 24th and 25th, 1991 at the ZEMBO MOSQUE TEMPLE in Harrisburg. WSC member Dave Pearlman is the Vice-President of the Keystone Federation. The Prospectus for the Show is now available. See the ad on the back page for more info.

Three major stories in Linn's the past month included the following:

1. The U.S.P.S. made a profit of about \$20 million on Stamp Expo '89. They now plan to have another major Stamp show in 1994. The profit to be made here will help pay for a major stamp museum. This museum will be known officially as the National Postal History and Philatelic Museum, and will be located on Capital Hill, Wash. D.C., in a 1914 building now known as the City Post Office. The renovation is already under way. Present plans call for opening of the museum in Dec. 1992 and full operation in March 1993. It will become part of the Smithsonian Museum system.

2. Scott made major changes in its 1991 Specialized Catalogue. It features new sections for Autoposts, special printings, and many new listings for both classical and modern U.S. varieties previously unrepresented.

3. Block tagging is now dead on U.S. stamps. All future stamps produced by the BEP will have full coverage tagging. This means that all printings of new and existing



WILKINSBURG STAMP CLUB NEWSLETTER

Meets 2nd and 4th Sundays

January 1991

Box 8711, Wilkinsburg, PA 15221

A. P. S Chapter 1214

At this time we are still working on several problems relating to our April 6 - 7, 1991 WILKPEX show: Due to the fact that we had to find a new location for the show because the Bloomfield Moose had been sold, we were forced to change the date of our show. Therefore, we lost a good many of our "regular" dealers because they had already signed contracts for those days. Joe Brasch reports that he still needs about 8 more dealers to fill the bourse.

We are having trouble with the cachet: The new owners of the Pittsburgh Pirates and Major League Baseball Properties have not yet given us the OK to go ahead with our proposed '91 cachet. If we do not hear from them real soon, we either need another idea (baseball related) or we do not have a cachet for this year.

The third concern has been the lack of us being listed in "The American Philatelist" monthly "Show Time" column. This listing seems to be the only official show listing in America. If we are not in the January issue ...

Everything always works out in the end. We will end up with a lot of new items and Joe will get in touch with more dealers.

We hope people are working on getting an exhibit together for this show.

These, and other items of equal importance will be discussed at the meeting this Sun.

Starting with the John Marshall stamp and continuing on many subsequent 1990 issues, marginal inscriptions describing the stamp's subject and significance have been in existence. Collectors so far seem not to have noticed. But, if in the future the USPS places the inscriptions consistently without impinging on the plate block, it may emerge that 1990 launched another type of collectible.

Six years ago the cents symbol was dropped from U.S. stamps. Minimalism was the watchword among the artists who control our stamp designs. This eliminated design clutter, they said. Some postal clerks however thought the stamps ambiguously labeled "2" as representing \$2, rather than 2¢. By adding a zero before single digit denominated stamps, the USPS tried to resolve denomination confusion. This was introduced on the 5¢ Luis Munoz Martin definitive which was also the first Great American stamp to describe its stamp in the margin.

Maybe in 1991 we will again see the cents symbol and even "United States Postage" returned to our stamps. (Original ideas above from Michael Laurence, Linn's Editor)

The first stamp to be issued in 1991 will be the so-called F-stamp. It is to be released around Jan. 14th. Accompanying this stamp will be a non-denominated make-up rate stamp which will represent the difference between the present 25¢ rate and the new rate. This stamp, the first of its kind, will make up the difference to equal the new first class postage rate, when used with a 25¢ stamp. This stamp will have no graphics, only text. It will not have phosphorescent tagging. (The closest U.S. stamps to this non-graphic concept are the 1960 American Credo stamps, each of which had other design elements added.)

Billions of copies of the F-stamp, which depicts a red tulip with a single green leaf on a yellow background, have been printed and shipped to storage and distribution facilities. The postal service has been very sensitive about this stamp, referring to



WILKINSBURG STAMP CLUB NEWSLETTER

Meets 2nd and 4th Sundays

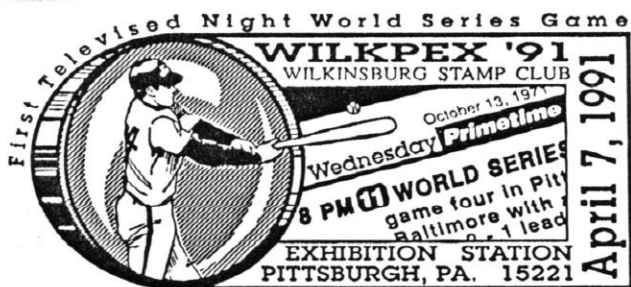
February 1991

Box 8711, Wilkinsburg, PA 15221

A. P. S. Chapter 1214

Lou Yagle will have the new plastic "F" stamp for sale at his table this Sunday. A sheet of 12 is \$3.49. Lou also has the Scott Specialized Catalogue #5, 1991 issue for those who ordered it, and he has an extra copy if someone wants to buy it. He also has the Scott Pocket U.S. Catalogue for sale at his table.

At the right is a copy of our show cancel for this year. We should have a picture of the cachet at the Feb. 24th meeting. We have made contact with Major League Baseball Properties on Park Ave. in NYC, but as of right now, we do not have their approval to go ahead and use the words "World Series" in our cachet. I hope to get this all straightened out soon. (Maybe they want us to put a picture of Barry Bonds on it and sell them for \$25 each.)



Last month I received a copy of the "Global Stamp News" in the mail. It's a new philatelic newspaper published in Sidney, Ohio. All the articles in it were of high interest to anyone who is a world-wide collector. It's FREE. The advertisers absorb the cost through their advertising fee. It was sent out to 20,000 collectors of foreign stamps. I highly recommend it to you if you collect foreign stamps. For your FREE copy (subscription) just write to: Global Stamp News, P.O. Box 97, 715 Johnston Drive, Sidney, Ohio 45365. (Jan Brandewie is the editor. Phone (513)-492-3183) You'll be glad you did. I was really impressed by the articles in it: they were not as technical as those in The American Philatelist.

WILKPEX '91 is only two months away. IT could be a disaster; it could be a very successful show. We are facing many questions about the show, even though we know what lies ahead. To make this show a success in this new location on this unusual date for our stamp show (we usually have it the third week-end in April) we will need more than luck and hard work. Areas of most concern include: exhibitors, volunteers to man the auction and "phlea market" and volunteers to work the reception table, and volunteers or as we called them last year-- Facility Engineers--- to help set up and tear down.

We have 17 dealers signed up, we hope to get 3 more. Tom Shaw suggests you get in touch with him (731-5026) or pick up a copy of the Prospectus if you are planning to have an exhibit this year. We will again have Bob Miller's "Keystone Auction" and the Philatelic Phlea Market. If you have any items for the Phlea Market you must get them to Charlie Schwab (421-8690) before March 25th. Cathy Blanchard has been busy doing the publicity for WILKPEX '91. Bill Uncapher and Jackie Abbott need stamps for packaging for free distribution to youngsters who visit the show. Please call the Show Chairmen: Joe Bayuk (462-1771) or Gene Bujdos (461- 0289) if you can serve on any committee. Harold Cline (371-3976) could use someone to help with the Booklet. This year will be the time for all to come to the aid of their stamp club. When you move to a new location you always wonder if the regulars will come to the show. Let's hope they do. I hope to have good news and a better newsletter next month.

As with last year's contemporary Christmas stamp, this year's contemporary Christmas stamp will probably get two different Scott numbers.

The sheet stamps were printed by the American Bank Note Company and are perf 11 and are printed on soft paper that leaves visible paper fibers when the stamps are separated.

The booklet version was printed by the Bureau of Engraving and Printing. It measures perf 11½ and is printed on hard brittle paper that separates cleanly.

These stamps also differ in color somewhat: The background red color on the ABNC sheet stamp is brighter and appears more evenly applied than that of the BEP. The green color used for the word "Greetings" and the trim on the tree is more of a blue-green on the ABNC produced stamps. The violet ornaments are light colored on the ABNC stamps. The lettering appears thicker on the BEP version.

In Fig. 1 on the right, the sheet version, made by the ABNC is on the left, and the booklet version, made by the BEP, is on the right.



Differences between the sheet and booklet versions of the contemporary Christmas stamp includes perf measurements, paper types and color. The sheet stamps were produced by the American Bank Note Co., and the booklet stamps were printed by the Bureau of Engraving and Printing. Fig. 1.

Richard L. Lazorow had an interesting article on plate blocks on page 16 of the Oct. 8, 1990 issue of Linn's. In summation, he stated that plate blocks have been divided into three distinct groups with widely divergent values. The first group includes early plate blocks up through the 1930s. The second group included those issued between 1940-1980. The third group includes those printed since 1980.

Current prices of many in the first group do not reflect the difficulty of finding them in acceptable condition. These stamps are now more than 60 years old and are starting to show wear and tear from being in and out of many albums and auction houses.

Most plate blocks in the second group are selling close to face value that they can not go any lower. Because of the large supply of stamps in the second group, their value will not go up for a long time. Exceptions seem to be Scott numbers 834, 1053, C31, and a few of the 1940 Famous Americans.

The third group is the emerging group. No huge holdings of any from this period seem to exist, thus dealers are already paying premium prices. Nearly all floating plate number strips of 20 stamps are appreciating. C109-12, C117, 1861, 1863a, and 1867 plus many commemoratives are heading higher. The chart in Fig. 2, below, shows a few of the top performers.

The top performers since 1981		
Scott No.	Face value	Retail price
1622c 13c Flag.....	\$2.60	\$70-80
1927 18c Alcoholism.....	\$3.60	\$45-50
O138 14c D Official.....	.56	\$30-40
J104 17c Postage Due.....	.68	\$15-20
2111 22c D series.....	\$4.40	\$15-20

This table shows some of the scarcest of modern plate blocks. Their prices indicate their relative scarcity. Fig. 2

NNNN

Stamps will have overall tagging or will be printed on prephosphored or phosphor-coated paper. This change in policy has already affected several stamps, including the \$1 Johns Hopkins stamp of the Great American series. These Hopkins stamps, printed on the BEP's A press, now exist with both block and overall tagging. Those with overall tagging appear slightly brighter to the naked eye than those with block tagging.

INQUIRING MINDS BEWARE: A souvenir sheet from Sierra Leone is being widely promoted by direct mail investment tipster Alan Feinstein. The stamp on the sheet shows a so called "Face on Mars," a mile wide configuration of rocks and shadows that is thought by New Age pseudoscientists to be the relic of an ancient civilization. See below.

The October issue of Feinstein's "Wealthmaker Quarterly Report" offers this space set for only \$135. One per customer, please. Soon, he says, this set will be worth over \$10,000 or more. Buyers beware. He is now promoting himself in a supermarket tabloid called Weekly World News. An article in it claims that an image similar to the Face on Mars has also been found beneath the Antarctic ice cap, and on Venus, Neptune, and the moon.

Season's Greetings. NNNN



FREE ADMITTANCE KEYSTONE FEDERATION STAMP SHOW

100 FRAME EXHIBIT • 27 DEALER BOURSE

ZEMBO MOSQUE TEMPLE
2801 N. 3rd Street
Harrisburg, PA 17110

MAY 24 - 25, 1991
Friday - 10:00 AM to 6:00 PM
Saturday - 10:00 AM to 5:00 PM

Sponsored by
Keystone Federation of Stamp Clubs

Special Show Cachet and Cancellation
U.S.P.S. Booth • Youth Area
Society/Club Meetings

FOR PROSPECTUS AND INFORMATION WRITE:
Federation Show
PO Box 85
Glen Rock, PA 17327

Incredible discovery revealed — in Antarctica!

TONE FACE FOUND UNDER POLAR ICE CAP

— & it's IDENTICAL to the image photographed on Mars in 1976!

German and American scientists have found a stone face under polar ice that's identical to the stone 'face' on Mars.

The mile-long monument also matches stone faces found on the moons, Venus and Neptune. And that suggests that the people or creatures who built them were capable of interplanetary travel.

over 500,000 years ago, when the images were made.

are believed to have been made by the same team.

The discovery refers to a hole in the ice that is 100 feet wide and 100 feet deep.

Dr. Lewis

Dr. Hansen

Sweden has best hobbies

Women looking for a hobby? Sweden has the best. The Swedish women's hobby is to travel. A recent survey of 1,000 Swedish women found that 80 percent of them had traveled abroad in the last year.

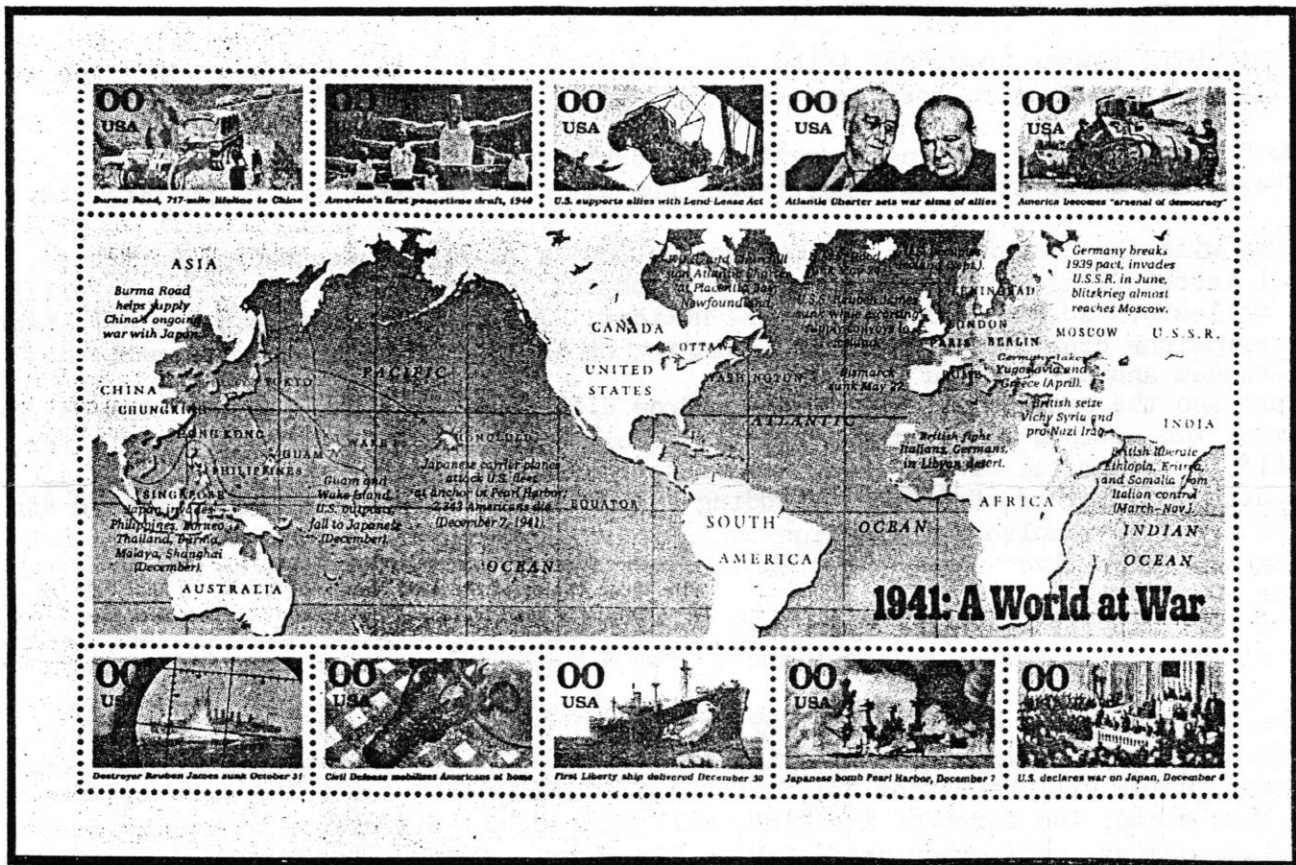
Sweden has the best hobbies. Women looking for a hobby? Sweden has the best. The Swedish women's hobby is to travel. A recent survey of 1,000 Swedish women found that 80 percent of them had traveled abroad in the last year.

it as the "Flower" stamp. They think that TV comedians like Johnny Carson, Jay Leno, and David Letterman who have many fans, will make fun of it and refer to it as the "F is for Failure" stamp.

The new rate increase, whatever it will be, will go into effect on Sunday, Feb. 3.

The design for a ten subject U.S. sheetlet commemorating World War II events of 1941 was unveiled at the White House late last month. Each sheetlet will contain 10 stamps, separated by a large gutter reproducing a large map. Two of these sheetlets will appear on a standardized post office pane, creating a se-tenant block of 10 where they meet. This will be the first of five such sheets to be released over the next five years, with a total of 50 stamp designs to commemorate the major events of WW II. (See copy from Linn's below.) Bear in mind that these sheetlets will not be issued in conjunction with a major national or international stamp show, as all previous U.S. souvenir sheets have been.

NNNN.



Shown here is the first of five scheduled U.S. sheetlets marking events in World War II. Two sheetlets make up a post office pane, creating a se-tenant block of 10 stamps where they meet. The essay stamps shown here bear a "00" denomination.