



WILKINSBURG STAMP CLUB NEWSLETTER

Meets 2nd and 4th Sundays

MAY 1990

Box 8711, Wilkinsburg, PA 15221

A. P. S Chapter 1214

WILKPEX '90 is history. We had another good show, thanks to our many workers. As co-chairmen of the show, Joe Bayuk and I would like to thank everyone who helped in any way to make the show a success. It takes a lot of work behind the scenes to make the show happen. Thanks to the "Facility Engineers" who helped us set up on Friday night, we were actually able to leave there at 10:30, an all time record: Paul Shortall, Larry Sisk, Tom Shaw, Sal Scicolone, Sal's son-in-law, Siggy Pehel, George Gatnarek, Joe Grana, Andy Novotny, Lou Yagle, John Hufnagel, and Joey from the Moose.

The Reception Committee of Bill Uncapher, Jackie Abbott, Faye Lemaley, Cathy Blanchard, Tom Shaw, Alice Brasch, Lou Pedzwater, Larry Sisk, Sal Scicolone, Leah Thomas, and Mary Dimmick did a fine job welcoming the 500 or so people who came to the show over the two days.

Orders for the souvenir sheet and cachet are still coming in. Harold will have a full financial report on the show by the end of next month. Lou Yagle thinks this could be an all time high for the amount of new souvenir sheets sold. The post master and Joe Bayuk think this year marks an all time high request for the cancel. Too bad we did not sell a cachet for every cancel Joe Bayuk and the clerks in the post office had to make.

Thanks to all the exhibitors and congratulations to the following winners: John Hufnagel's "Kansas-Nebraska Overprints Out of the B.E.P., Into the Hands of the Public" won the James McKalip Memorial Award for first place. John Hufnagel also won the "Keystone Award" for his exhibit. The second place winner was Tom Shaw's "Airlines of the World" exhibit. Third place went to Lou Yagle's "Cape Triangles." (By the way, Lou's exhibit was in the WARCOPEX "Court of Honor" in Warren, Ohio last week-end.) Gene Bujdos won the Ralph R. Crowley Memorial Award for the most popular exhibit for his "Good, Bad and Ugly" exhibit. Tom Shaw won the Alfred E. Ferranti Special Award in addition to second place. Joe Grana won an Honorable Mention Award for his "Black Heritage" exhibit. Jackie Abbott also won an Honorable Mention Award for her "What's the Difference?" exhibit.

People helping out in other behind-the-scenes areas: Cathy Blanchard on Publicity; Harold and Helen Cline did another fine job on the Booklet; Dave Pearlman on Exhibits; Dale Diebold and Jackie Abbott on Advance Mailings; Frank Sovec on "Ground Control" Sat. morning; Charlie Schwab, Charlie Currey, and Lou Yagle on the Philatelic Phlea Market; Joe Brasch set up the Bourse; and the Tear-Down Crew: Parvin Lippincott, Paul McCaffery, John and Stan Fliss, Bill Kust, Dave Pearlman, Tom Shaw, Paul Shortall, Larry Sisk, Siggy Pehel, Sal Scicolone, Andy Novotny, Joe Grana, and George Gatnarek.

If I missed any names from the above lists, please accept my apology. I hope I listed everybody. Andy Novotny's name was omitted from the list of workers in the Booklet, and that was my fault. Sorry, Andy.

We hope to return to the Moose for WILKPEX '91, but who knows what will happen to the building by next April. They are not honoring any commitments after Dec. 1990. The Moose in Bloomfield will be our number one choice for the show. However, in case we CAN not return we already have three locations we are looking into, just in case:

Maybe a return to Wilkinsburg-- the "Y", right behind the Masonic Temple; the Carnegie Library in Homestead, and St. Michael's Bingo Hall in M^unhall. Any other suggestions?

We also have two ideas for next year's cachet already: 20th Anniversary of the First Night World Series Game, in Pittsburgh of course, and 30th Anniversary of Wilkinsburg Stamp Club's Souvenir Sheet. (How can we tie the first souvenir sheet and cachet together?) Any other ideas? We need new blood in our committees; we need new ideas.

Thirty people had a good time at the SubAlpine Club in Turtle Creek on Sat. night, May 5th, for our Annual Awards Dinner. Paul McCaffery did another outstanding job as Master of Ceremonies. The Awards for WILKPEX '90 were presented to the winners. The food was good. The drinks were cheap. The treasurer was not there. Tom Shaw had a blank check to pay for the club's share of the night. So we spent all the club's money. Well, not ALL of it. We still have \$10.00 in the bank. Well, that's what happens when only 30 people show up. Now, you wish you did come to the Dinner. Too late pal. And you missed Paul's NEW jokes. Actually they were vintage 1957. Not bad though. (for 1957.) Parvin Lippincott had a different way to end the evening: Philatelic Trivial Pursuit. He divided the group into three teams and it worked out fine. Parvin spent some time preparing the questions and it really worked out for a nice way of socializing. Everybody had an enjoyable evening. Thanks Paul, Parvin, and your wives.

Remember, Lou Yagle is giving his famous program on "The History of Stamp Collecting" after the regular meeting on May 27th. It's informing and funny. Bring a friend.

This month's tips: There is a renewed interest in plateblock collecting. About 10 years ago collectors stopped buying plate blocks. In the 1970s plate blocks became much larger than a block of 4 stamps. The postal rates kept increasing, and a lot of new stamps were printed every year. "Too many," some people said. Many recent setenant blocks are getting scarce. John Ross in his weekly column in Linn's suggests to make sure you own all U.S. plate blocks of setenant stamps, especially Scott 2240-43. (Wood-carved Figurines)



Did you buy one sheet of the 1990 Love stamp? You should. It is the first U.S. stamp produced by the United States Banknote Co. (The 2nd one will be the "F" sheet stamp.) It is the first U.S. stamp to be perforated 12½ (horizontal) by 13. It is the first true comb-perforated U.S. stamp. It is the first U.S. stamp to be perforated in multiple sheets.

John Ross recommends buying plate blocks of the 1986 United States Wood-carved Figurines issue.

The only item of interest to many collectors was the appearance of printing cylinder numbers in the selvage with the prefix letter "U."

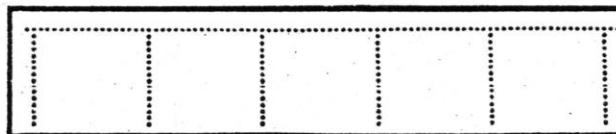


Figure 1. A single comb perforator resembles a comb with teeth. Shown here is one perforated row.

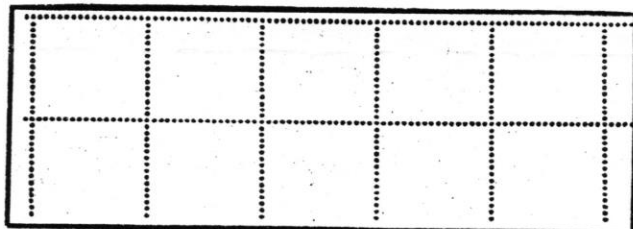
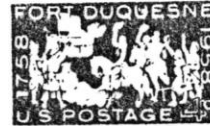


Figure 2. A double-comb perforator, as was used on the 1990 Love sheet stamp, perforates two rows at a time.

Some collectors noticed the different typeface used for the marginal inscriptions and a few noticed the narrower-than-usual selvage where the marginal markings are printed.

Because of the current bad relationship between the USPS and the BEP, and the desire of the USPS to farm out an increasing number of stamp issues, collectors will be hearing more of the USBC during the next several years.

By the end of May the American Bank Note Co. will also be a wholly owned subsidiary of USBC. These Love sheets were printed in the Jeffries Banknote Los Angeles plant. Cylinder number combinations U1111, U2222, U3223, U3323, U3333, and U3353 have been found so far. For a more detailed report on these Love sheets get the April 30th issue of Linn's.



WILKINSBURG STAMP CLUB NEWSLETTER

Meets 2nd and 4th Sundays

June 1990

Box 8711, Wilkinsburg, PA 15221

A. P. S Chapter 1214

President Parvin Lippincott has appointed a Nominating Committee consisting of Sal Scicolone, Paul McCaffery, and Paul Wyzenbeek to find candidates for officers for next year. The elections will be held at the second meeting this month, June 24th. If you are interested in being an officer in the club, please let a member of the Nominating Committee know.

A motion made by Paul McCaffery to change the term of office for all officers from one year to two years is pending. To ammend our By-Laws, a motion must be approved in writing by two-thirds of the membership, hence the tear-away at the bottom of the page. Please use it to vote, and mail ~~it~~ to Tom Shaw at our post office box before June 21st.

We would like to welcome new members Frank Fieser, Gerald Orndorff, Carry VanTol, Michelle Stout and Mary Beck to the club.

Lou Yagle is still getting requests for souvenir sheets, and occasionally we get a request for a cachet in the mail. We'll close the book on WILKPEX at the end of the month. Harold Cline says we made about \$230 on the show. Detailed report on WILKPEX '90 in the next Newsletter.

Dues notices or membership cards are enclosed with this Newsletter. If you found a note concersing dues, please remit same to Harold Cline ASAP. Thank You.

Lou Yagle gave his talk on "The History of Stamps" at the last meeting and we did not get any real increase in attendance. The Memorial week-end was not a good time to schedule that program evidently.

If your membership number is 169,173, or 177, please see Charlie Schwab concerning items/money from the Philatelic Phlea market.

Lou has about 8 1990 Fulton U.S. stamp albums for sale at his table. They retail for \$35 but if you want a good loose-leaf album for \$23.30 see Lou soon.

He will be placing an order for 1991 Scott catalogue Volume I soon, so see him if you want to place an order for anything and save about 33%.

Last month's \$5.00 winners were Lou Yagle and Bob Beck.

Paul Wyzenbeeb is looking into the possibility of locating WILKPEX '91 at a firehall in Monroeville. We have already ruled out returning to the "Y" in Wilkinsburg.

-----CUT-----HERE-----

Mail to: Wilkinsburg Stamp Club, Tom Shaw, Secretary, P.O.Box 8711, Wilkinsburg, Pa. 15221.

Check one: Tom, please count me for _____, against _____ the idea to change the term of office for the club's officers from one to two years.

Name _____ Membership # _____

Comments:

Randy Neil featured Lou's letter in his column in the May 28th issue of Linn's on page 62. He urged the 800 stamp clubs that Lou wrote to support Lou's idea to put the date on all future U.S. stamps. An excellent article, Randy.

Kath Blanchard found a way for the club to cut the printing costs for this Newsletter. Using our Canon copier, we can get about 2000-2500 copies per cartridge. The lowest price for a new cartridge is about \$81 including tax, at a PACE warehouse. She notified us that a company in Bethel Park, Stuart Industries, can recharge the old cartridge several times and make them work better than new, for less than \$50. Thank you Kath.

WANTED: Covers and post cards from Hong Kong, British Offices in China, Palestine forerunners, all types of sea post and ship mail (U.S. sea post, U.S.-German seapost, German-American sea post, German sea post, Japanese sea post, ship letters, etc.) Will pay top prices. See Paul Wyzenbeek. You can write to him at 530 Fieldstone Drive, Monroeville, Pa. 15146.

If you did not place an order for the plastic stamps with the Philatelic Catalog, you may want to visit the philatelic clerk at the Northside Post Office, he has a few hundred of them for sale.

On June 1 the first high-value stamp in the new Wildlife series went on sale, the \$2 Bobcat. This series will eventually replace the current high-value Great American series.

Auto post is now history. The four experimental U.S. postage machines in the Washington DC area were removed from service on May 7th. Auto post machines were experimental units that dispensed self-adhesive postage strips.

Believe it or not, you may want to visit your local Giant Eagle to buy some "stamps" from Grenada. Grenada released 81 30¢ Baseball stamps in sheetlets of nine, on May 28, 1988. One of them pictured Pete Rose and the logo of the Cincinnati Reds, Scott 1665g. However, this stamp was NOT included in the 10 week supermarket campaign offered by Philatelic International of Park City, Utah. The Rose stamp was replaced by a label simply saying, "U. S. Baseball/Series 1." The Rose stamp was removed at the request of Major League Baseball.

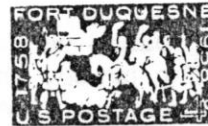
Philatelic International is test-marketing the Baseball stamps throughout supermarket chains in two areas, Boston and New England, and Pittsburgh and southern Ohio. The chains involved are Purity Supreme, Heartland, Angelo's and Giant Eagle.

The promotion will last for 10 weeks. During the first week customers can buy the first sheetlet (the one that includes the label instead of the Pete Rose stamp) for \$1.99. Each week for the next 9 weeks, another sheetlet will be featured for \$1.99.

Stamp and baseball card collectors are reportedly buying them.

Previously, Philatelic International sold the Walt Disney stamps through supermarkets. They sold more than 100,000 sets of Disney stamps and albums. Their Baseball stamp promotions are reportedly doing better than the Disney promotion.

NNNN



WILKINSBURG STAMP CLUB NEWSLETTER

Meets 2nd and 4th Sundays

July 1990

Box 8711, Wilkinsburg, PA 15221

A. P. S Chapter 1214

With no nominations from the floor, the slate of officers presented by the Nominating Committee was unanimously voted into office. So here are our WSC officers for the next year: President-Parvin Lippincott; Vice President-Joe Bayuk; 2nd Vice President- Bill Uncapher; Secretary-Tom Shaw; and Treasurer-Harold Cline. (Same Live Crew.) Yours truly, Gene Bujdos, will remain editor of the club's newsletter for one more year.

The vote to ammend the constitution regarding the term for officers has received Only 50 responses, not enough of the 2/3 rds membership needed to pass. The deadline is 30 days after the first newsletter notice.

Paul Wyzenbeek presented a report on the Garden City Fire Hall in Monroeville as a possible site for WILKPEX '91. Several problems were brought up: the cost, bingo conflict on Friday, Sunday flea market, and lack of public transportation.

Marlin Herbert read a letter from the Precancel Society's Newsletter endorsing Lou Yagle's proposal of placing the date of issue on all US stamps.

We are sorry to report that member Anthony Santella died on January 5th. We have transferred his membership over to his wife Lucille.

John McCrea made a motion for the club to purchase the book "China-Treaty Ports 1878-1935" for the club's library. The motion passed.

Last month's \$5.00 winners were Joe Cucchiara and Louise Turano.

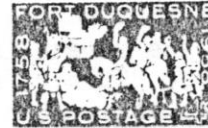
Harold has filed his final report on WILKPEX '90. To wit- we made a profit of \$246.60.

| | Income | Expense | Net Profit |
|--------------|--------|-----------|------------|
| General Show | \$1900 | \$1799.40 | \$100.60 |
| Frame Rental | 71 | ---- | 71.00 |
| Auction | 75 | ---- | 75.00 |
| TOTAL | \$2046 | \$1799.40 | \$246.60 |

- Notes:
1. Souvenir sheet and Cachet income or loss will be reported on an annual basis and reflected in the Annual P&L Statement rather than being strictly a Show item.
 2. Dealers paid additioanl for table rental, which gave them ad space in the Show Booklet. No other ads were solicited.
 3. Income for Show compares with \$573.61 profit made on 1989 Show.

If you ordered any supplies from Lou Yagle, please be informed that all orders are in, except for the Minkus supplements. Lou also has copies of Scott Catalogue Vol. I on hand. He is taking orders for Vol. II which comes out at the end of this month. He also has a dozen copies of a new US album published by Fulton Publishing Co. Retail price is \$35. WSC members' price is \$23.30. Loose leaf, firm binder, great buy. See Lou.

Did you notice that the world's most valuable stamp no longer is the British Guiana 1¢ magenta? A telephone bidder paid 1.9 million Swiss francs to become the owner of a unique



WILKINSBURG STAMP CLUB NEWSLETTER

Meets 2nd and 4th Sundays

August 1990

Box 8711, Wilkinsburg, PA 15221

A. P. S Chapter 1214

We are sad to report that WSC member George Roup died. George was a regular at the Sunday meetings. He designed his own comical cachets on transportation. They were real collector's items. We will really miss having old George around.

Harold Cline has filed a Statement of Income and Expenses for fiscal year ending June 30, 1990. This detailed two page report is available at any Sunday meeting.

We are still looking for a place to hold WILKPEX '91. Nothing definite has been decided. We are hoping to return to the Bloomfield Moose, but ...

Last month's \$5.00 winners were Justin Caputo and Mary Louise Turano.

We would like to welcome Teresa Beck to the WSC.

Last month I received my poster from the USPS for October's promotion of National Stamp Collecting Month for my Ben Franklin Club in school. The four stamp se-tenant block depicts mammals common to the U.S. and the Soviet Union and will be released on Oct. 3rd. The year date on the stamps was a USPS concession to the Soviets, not to Lou.

A commemorative booklet of 20 stamps, depicting 5 different American Indian Headresses will be released in Cody, Wyoming on Aug. 17th.

A 5¢ transportation coil featuring a circus wagon will be released Aug. 31st in Syracuse, New York. This will be the third different 5¢ coil in the series.

Quite a few members were interested in my comments about Amsterdam in last month's newsletter. I always thought that most stamp collectors were NEAT, ORGANIZED, and VERY KNOWLEDGEABLE IN WORLDLY EVENTS. Now I must add TRAVELER to that list.

I found out that Charlie Schwab was in London in May for STAMP WORLD '90. And when he was in Amsterdam a few years ago, he stayed at the same hotel we stayed, the Hotel Pulitzer. Harold Cline and his wife stayed at the Pulitzer when they were in Amsterdam, too. Harold also climbed to the top of the Westerkerk, the church next to the Ann Frank House. Small world.

I got a nice two page letter from WSC member Richard Melnick. He also uses the Stamp Collector's Guide to Europe in his travels. While in Switzerland, he visited the postal museum in Berne. To quote Richard, "I was able to get a free souvenir card with a block of 30 centime stamps, dated June 30, 1990, the opening date of the new PTT Museum at 16 Helvetiastrasse in Berne. The postal collection is housed on two floors. The upper two floors are devoted to the history of the telephone and telegraph. The first floor is devoted to postal vehicles and the basement level houses the stamp collection in slide-out glass showcases. I was even able to photograph the Zurich cantonal reconstructed sheet of 6 rappen of 1843. This was featured in Linn's June 18th, p.28, "Philatelic Gems."

"I was able to take a train and bus to Vaduz, Liechtenstein, and buy stamps at the p.o. on a Saturday before they closed at noon. The postal museum was open across the street. I had a chance to view their collection, also in glass sliding cases and I paid 1 Swiss franc to get my passport stamped. Along the way in Switzerland I got yo use the Frama meter machines at many Swiss p.o. Once in Lausanne, I took the ferry to France at



WILKINSBURG STAMP CLUB NEWSLETTER

Meets 2nd and 4th Sundays

September 1990

Box 8711, Wilkinsburg, PA 15221

A. P. S Chapter 1214

The new stamp season is upon us. The USPS is ready to go into their annual promotion of October as National Stamp Collecting Month. Local clubs are getting ready to entice new collectors into the hobby. Please do your best to try to get new members for the club. Give stamps to kids. Show them your collection. Tell them how to get started.

Paul McCaffery is willing to try to move the Annual Dinner back to November. This idea was discussed at a meeting but no decisions have been made regarding a date or location. Please inform Paul of your willingness to attend or help him plan this event.

We have received a Prospectus from the Philatelic Society of Pittsburgh for PITTPEX, Nov. 3-4. Their show will again be at the Robert Morris College Campus in Moon Township on Narrows Run Road in Coraopolis. If you would like to be an exhibitor at PITTPEX '90, please see the Prospectus at the sign-in table this Sunday.

Joe Bayuk will again assume the role of a college prof. The Boyce Campus of the Community College of Allegheny County is offering "Stamp Collecting" as an Adult Education Leisure Learning class. The class will begin on Sept. 19th and run for 12 Wed. evenings from 7-9 PM at Dickson School on Schoyer Ave in Swissvale. Tuition is \$25. You can register by calling 733-4226 or 733-4227 and have your social security and either your Visa, Mastercard, or Discovery Card numbers ready. Course description: "For beginning or advanced collector. Learn more about Philately from a member of the Wilkinsburg Stamp Club who has been a collector for more than 40 years. Every week a different topic will be discussed in detail and you will see examples of a fantastic collection. Just about everything you ever wondered about stamps." The course number is XBE-102, Section 34.

Yes, Lou Yagle started this class a few years ago. And, he may be a guest lecturer.

16 membership cards and 34 second dues notices went out with this Newsletter.

The Athletic Department of Fordham University bought a large supply of our cachets from WILKPEX '89. They probably will give them away to visitors at their Homecoming this Fall.

The USPS wonders why they get such a bad reputation. How could a lettercarrier (s), continue to let mail pile up for six months on a porch like they did with the two elderly women in Morningside? Everyone will be investigating this mess.

World-wide collectors: did you see in the news that the countries of Libya and the Sudan have merged into one country?

Thanks to modern technology, and greed, color photocopies of stamps are now being used to defraud the USPS. Although a color photocopier cannot duplicate the phosphorescent tagging that appears on genuine stamps, the bright white paper glows readily under longwave ultraviolet light. This glow is bright enough to trip the facer-cancelers that





WILKINSBURG STAMP CLUB NEWSLETTER

Meets 2nd and 4th Sundays

October 1990

Box 8711, Wilkinsburg, PA 15221

A. P. S Chapter 1214

We are moving our Annual Dinner back to the month of November. And, since we already had one Dinner this past April, then I guess we should say that this year we are going to have our Semi-Annual Dinner this November 10th at the SUBALPINE ITALIAN CLUB located at 108 Ninth Street in Turtle Creek, Pa.

Cocktails at 6:00. Sit-down dinner at 7:00. \$5.00 for WSC members and \$10.00 for guests. We will be in the banquet room in the basement. The DEADLINE to notify Paul McCaffery will be Nov. 3rd. ALL ADVANCED RESERVATIONS WILL BE GREATLY APPRECIATED. The awards for WILKPEX '90 have already been presented, so we will have more time for socializing. Paul will again be the Master-of-Ceremonies. We hope to have about 50 at this Dinner. Please use the form at the bottom of this page to order your dinners and send it to Paul ASAP.

Twelve local stamp dealers are boycotting the annual Pittsburgh Show this year. They are having their own show at the YMCA Downtown on Blvd. of the Allies at the end of this month. Some of those dealers are members of our club, hence the ad on the back of this page.

A decision has been made for the location of WILKPEX '91: We will move into the new OLYMPIA HALL located at 1575 Electric Ave. in East Pittsburgh, Pa. It is a seven year old white one story building across the street from the Greek Catholic Church. A large free parking lot is to the left of the building. We can load/unload 3 or 4 dealers at one time in the front of the building off the street. The floor is carpeted and a lot cleaner than the Moose. The size of the main room is smaller than that of the Moose, but we will try to put the Post office and the Ben Franklin Table in the little room off to the right, which serves as a 'bar area' if you have been there at a wedding reception. It's right off Ardmore Blvd. and the Parkway East. (Actually, it's about 5 minutes away from the SubAlpine Italian Club in beautiful downtown Turtle Creek by the sea.) APRIL 6th and 7th are the dates for WILKPEX '91.

Lou Yagle bought 23 folding chairs for the club. They should be in the room for us to use this Sunday. Thanks, Lou.

October is National Stamp Collecting Month. Give stamps to kids. Promote the hobby.
Cut Here

Make your check payable to "Wilkinsburg Stamp Club" and mail it to Paul McCaffery, 1214 East End Ave., Pittsburgh, Pa. 15218 before Nov. 3, 1990.

Paul: Enclosed please find a check for \$ _____ for _____ Dinner(s) at the SubAlpine Italian Club in Turtle Creek on Nov. 10th at 7:00. Cash bar opens at 6:00.

Name _____

I would like to order the $\frac{1}{2}$ Roasted Chicken ____; Ham ____; Fish Dinner (Cod) ____.
WSC members: \$5.00. Guests: \$10.00. All dinners include tossed salad with Italian dressing, vegetable, potato, bread, butter, dessert, coffee, or tea.

Comments:



WILKINSBURG STAMP CLUB NEWSLETTER

Meets 2nd and 4th Sundays

November 1990

Box 8711, Wilkesburg, PA 15221

A. P. S Chapter 1214

About thirty people were to have attended the Annual Dinner at the SubAlpine Italian Club in Turtle Creek, Pa. on Saturday evening. Paul McCaffery was the organizer and Master-of-Ceremonies. I am sure he did a good job, as he usually does.

As noted in last month's newsletter, due to the fact that the Bloomfield Moose was no longer available for rent by anyone because it was sold to the West Penn Hospital, we were forced to move our show to a different location. After a summer of searching, and with not too many places or dates available, we just about HAD TO settle on the dates of April 6 & 7, and the location of the OLYMPIA HALL at 1575 Electric Ave. in East Pittsburgh, Pa. We really did not have many places or dates to pick from. It was almost IMPOSSIBLE to have our show the third week-end in April, no matter what it says in the by-laws. These by-laws will have to be changed. Yes, we are going to lose some dealers because the Columbus, Ohio show is the same week-end, but that's the way it is, and we have to make the most of this situation. It was in the best interest of the WILKINSBURG STAMP CLUB that this date and location were decided upon, so, as a group, we better get our act together, quit moaning, and move on.

At this time, the cachet committee is thinking of honoring the 20th anniversary of "The First Night World Series Baseball Game" once we get it cleared from the Pirates. Any ideas for the cachet using that idea? Or, does anyone have a better suggestion? Last chance. Time is running out soon.

Since Christmas is less than 8 weeks away, it is probably a good time to remind members that we have ten copies of the Keystone Federation's "Pa. ON STAMPS" albums for sale at \$8.00 each. These are great for any age beginner or advanced collector. Out of state members can write to our PO Box if interested.

Lou Yagle has a dozen copies of a new U.S. album published by the Fulton Publishing Co. Retail price is \$35. WSC members' price: \$23.30. Loose leaf, heavy duty dark blue binder, up to date, free supplement for new issues. See Lou.

The following article is from member George Gatnarek:

"Many years ago an uncle of mine who lived in Czechoslovakia and I would exchange stamps since we were stamp collectors. Eight years ago my uncle died. All correspondence ceased. Years went by. Early this year I received a letter from my uncle's grandson who is learning English and asked if I would correspond with him, that it may help him learn to write English better. So I did. I have learned that my cousin has taken over his father's stamp collection and we are now exchanging stamps. I feel blessed when I look through my Czech collection." (Thanks, George.)

The 1991 stamp program, which now contains more than 112 new designs, most of them commemoratives, will grow even larger, due to the rate increase due to go into effect Feb. 3, 1991. Then, a stamp for every rate in every classification would take at least 147 new denominations. The popular transportation coils will be expanded, not discontinued.



WILKINSBURG STAMP CLUB NEWSLETTER

Meets 2nd and 4th Sundays

December 1990

Box 8711, Wilkinsburg, PA 15221

A. P. S Chapter 1214

Harold Cline, our Treasurer, was given the "MAN OF THE YEAR" award at the Annual Dinner last month. And quite deservedly, I might add. In addition to his regular duties as the club's Treasurer, Harold and his wife Helen have done a great job on the club's annual Show Booklet for the past six years. Congratulations, and thanks Harold. And Helen.

Charlie Schwab will have some stamps of interest to those of you looking to fill spaces in your U.S. album for the years 1928-48, including plate blocks, at his AUCTION TABLE this Sunday. See Charlie and place a bid, or three.

Lou Yagle will have the 1991 Harris and Scott pocket check list catalogues at his table this Sunday. They retail for \$5.95 each but are available to WSC members for \$3.97. Lou also will have many old mint U.S. stamps that you can buy at 10% off face. He will also have the Federation's "Pa. on Stamps" album for sale at \$8.00.

The club Treasurer reports that his records indicate the following 14 members have not paid their dues for the 7-1-90 to 6-30-91 year: #46 Edwin C. Clemm, #106 Milton Stein, #150 Mary Lou McHenry, #163 Edward R. Kooser Sr., #181 Michael DeBlasio, #183 Bill Kust, #193 Earl S. Wilson, #200 Adam Krouskop, #205 Daniel Hirschfield, #210 Ian MacLellan, #211 Greg MacLellan, #219 George S. Gavula, #225 Matt Andrew Reimaley, and #228 Erin R. Remaley.

We sincerely hope you will renew your membership in one of Pa.'s largest stamp clubs but we have no alternative except to remove your name from our roster unless we receive your payment within 30 days. If you have any questions, please call Harold E. Cline at 371-3976.

Sorry to report the death of WSC member Eula Ortman. She died the first week of November.

The Keystone Federation of Stamp Clubs, of which we are a member, will be holding their FIRST ANNUAL STAMP SHOW on May 24th and 25th, 1991 at the ZEMBO MOSQUE TEMPLE in Harrisburg. WSC member Dave Pearlman is the Vice-President of the Keystone Federation. The Prospectus for the Show is now available. See the ad on the back page for more info.

Three major stories in Linn's the past month included the following:

1. The U.S.P.S. made a profit of about \$20 million on Stamp Expo '89. They now plan to have another major Stamp show in 1994. The profit to be made here will help pay for a major stamp museum. This museum will be known officially as the National Postal History and Philatelic Museum, and will be located on Capital Hill, Wash. D.C., in a 1914 building now known as the City Post Office. The renovation is already under way. Present plans call for opening of the museum in Dec. 1992 and full operation in March 1993. It will become part of the Smithsonian Museum system.

2. Scott made major changes in its 1991 Specialized Catalogue. It features new sections for Autoposts, special printings, and many new listings for both classical and modern U.S. varieties previously unrepresented.

3. Block tagging is now dead on U.S. stamps. All future stamps produced by the BEP will have full coverage tagging. This means that all printings of new and existing



WILKINSBURG STAMP CLUB NEWSLETTER

Meets 2nd and 4th Sundays

January 1991

Box 8711, Wilkinsburg, PA 15221

A. P. S Chapter 1214

At this time we are still working on several problems relating to our April 6 - 7, 1991 WILKPEX show: Due to the fact that we had to find a new location for the show because the Bloomfield Moose had been sold, we were forced to change the date of our show. Therefore, we lost a good many of our "regular" dealers because they had already signed contracts for those days. Joe Brasch reports that he still needs about 8 more dealers to fill the bourse.

We are having trouble with the cachet: The new owners of the Pittsburgh Pirates and Major League Baseball Properties have not yet given us the OK to go ahead with our proposed '91 cachet. If we do not hear from them real soon, we either need another idea (baseball related) or we do not have a cachet for this year.

The third concern has been the lack of us being listed in "The American Philatelist" monthly "Show Time" column. This listing seems to be the only official show listing in America. If we are not in the January issue ...

Everything always works out in the end. We will end up with a lot of new items and Joe will get in touch with more dealers.

We hope people are working on getting an exhibit together for this show.

These, and other items of equal importance will be discussed at the meeting this Sun.

Starting with the John Marshall stamp and continuing on many subsequent 1990 issues, marginal inscriptions describing the stamp's subject and significance have been in existence. Collectors so far seem not to have noticed. But, if in the future the USPS places the inscriptions consistently without impinging on the plate block, it may emerge that 1990 launched another type of collectible.

Six years ago the cents symbol was dropped from U.S. stamps. Minimalism was the watchword among the artists who control our stamp designs. This eliminated design clutter, they said. Some postal clerks however thought the stamps ambiguously labeled "2" as representing \$2, rather than 2¢. By adding a zero before single digit denominated stamps, the USPS tried to resolve denomination confusion. This was introduced on the 5¢ Luis Munoz Martin definitive which was also the first Great American stamp to describe its stamp in the margin.

Maybe in 1991 we will again see the cents symbol and even "United States Postage" returned to our stamps. (Original ideas above from Michael Laurence, Linn's Editor)

The first stamp to be issued in 1991 will be the so-called F-stamp. It is to be released around Jan. 14th. Accompanying this stamp will be a non-denominated make-up rate stamp which will represent the difference between the present 25¢ rate and the new rate. This stamp, the first of its kind, will make up the difference to equal the new first class postage rate, when used with a 25¢ stamp. This stamp will have no graphics, only text. It will not have phosphorescent tagging. (The closest U.S. stamps to this non-graphic concept are the 1960 American Credo stamps, each of which had other design elements added.)

Billions of copies of the F-stamp, which depicts a red tulip with a single green leaf on a yellow background, have been printed and shipped to storage and distribution facilities. The postal service has been very sensitive about this stamp, referring to



WILKINSBURG STAMP CLUB NEWSLETTER

Meets 2nd and 4th Sundays

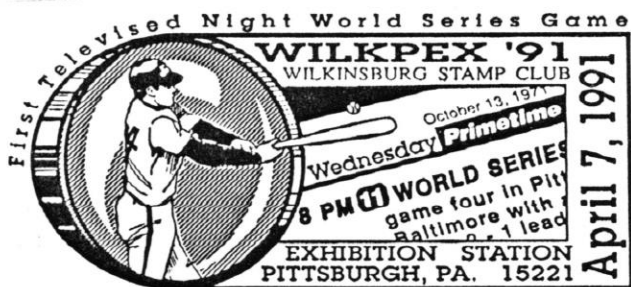
February 1991

Box 8711, Wilkinsburg, PA 15221

A. P. S. Chapter 1214

Lou Yagle will have the new plastic "F" stamp for sale at his table this Sunday. A sheet of 12 is \$3.49. Lou also has the Scott Specialized Catalogue #5, 1991 issue for those who ordered it, and he has an extra copy if someone wants to buy it. He also has the Scott Pocket U.S. Catalogue for sale at his table.

At the right is a copy of our show cancel for this year. We should have a picture of the cachet at the Feb. 24th meeting. We have made contact with Major League Baseball Properties on Park Ave. in NYC, but as of right now, we do not have their approval to go ahead and use the words "World Series" in our cachet. I hope to get this all straightened out soon. (Maybe they want us to put a picture of Barry Bonds on it and sell them for \$25 each.)



Last month I received a copy of the "Global Stamp News" in the mail. It's a new philatelic newspaper published in Sidney, Ohio. All the articles in it were of high interest to anyone who is a world-wide collector. It's FREE. The advertisers absorb the cost through their advertising fee. It was sent out to 20,000 collectors of foreign stamps. I highly recommend it to you if you collect foreign stamps. For your FREE copy (subscription) just write to: Global Stamp News, P.O. Box 97, 715 Johnston Drive, Sidney, Ohio 45365. (Jan Brandewie is the editor. Phone (513)-492-3183) You'll be glad you did. I was really impressed by the articles in it: they were not as technical as those in The American Philatelist.

WILKPEX '91 is only two months away. IT could be a disaster; it could be a very successful show. We are facing many questions about the show, even though we know what lies ahead. To make this show a success in this new location on this unusual date for our stamp show (we usually have it the third week-end in April) we will need more than luck and hard work. Areas of most concern include: exhibitors, volunteers to man the auction and "phlea market" and volunteers to work the reception table, and volunteers or as we called them last year-- Facility Engineers--- to help set up and tear down.

We have 17 dealers signed up, we hope to get 3 more. Tom Shaw suggests you get in touch with him (731-5026) or pick up a copy of the Prospectus if you are planning to have an exhibit this year. We will again have Bob Miller's "Keystone Auction" and the Philatelic Phlea Market. If you have any items for the Phlea Market you must get them to Charlie Schwab (421-8690) before March 25th. Cathy Blanchard has been busy doing the publicity for WILKPEX '91. Bill Uncapher and Jackie Abbott need stamps for packaging for free distribution to youngsters who visit the show. Please call the Show Chairmen: Joe Bayuk (462-1771) or Gene Bujdos (461- 0289) if you can serve on any committee. Harold Cline (371-3976) could use someone to help with the Booklet. This year will be the time for all to come to the aid of their stamp club. When you move to a new location you always wonder if the regulars will come to the show. Let's hope they do. I hope to have good news and a better newsletter next month.

Swedish 1855 3-skilling banco yellow error on May 20th at a David Feldman auction in Zurich, Switzerland. The price, which included an unspecified buyer's commission, is about \$1.35 million at current rates of exchange. This makes the first time that a single stamp sold for more than a million dollars. The owner is a prominent Swedish industrialist.

After 10 years of fighting and 4 months of negotiating, the Bureau of Engraving and Printing and the USPS have signed an operating agreement that specifies how the two agencies will do business over the next 5 years. The 21 page document is the most comprehensive agreement ever negotiated between the BEP and the USPS during the 96 years that BEP has manufactured stamps for USPS and its predecessor, the US Post Office Department.

The document consists of a preamble, 10 articles, and one attachment. The two articles most likely to interest collectors are "Program" and "Select Stamps." In the "Program" article, BEP commits to produce stamps with water-activated adhesives, "excluding rate change items," for the next 5 years, under certain conditions. An important condition is that BEP will gradually decrease the percentage of stamps it produces from 80% of the total USPS requirement in fiscal year (FY) 1991 to 75% in FY 1992 and 1993, and to 70% in FY 1994 and 1995. The USPS estimates that between 30 - 50% of its total stamp needs will be procured from the private sector in FY 1994.

The initial percentages are based upon a 40 billion USPS stamp forecast for FY 1991. Thus, BEP will need to manufacture 32 billion stamps to comply with 80% called for in the agreement. The agreed upon BEP product mix for FY 1991 is divided into sheets, booklets, and coils. Sheets represent 15% of the total program. Within this category are commemoratives, 20%; aerograms, 1%; airmail sheets, 7%; prime rate stamps, 25%; and ordinary sheets and reprints, 47%. Booklets represent 30% of the total program. Within this category are commemoratives, 16%; and prime rate stamps, 84%. Coils represent 55% of the total program. Within this category are coils of 100, 66%; coils of 500, 14%; and coils of 3000, 20%.

The agreement is silent on pressure-sensitive stamps, which are just beginning to emerge. The first market test was the 1989 Eagle and Shield unfolded booklet pane. The second test involves the Automatic Teller Machine \$3 plastic pane released in Seattle on May 18th. And, another Eagle and Shield issue is scheduled for release later this summer.

On a personal note, my wife and I, and four friends, went to Amsterdam last month to see the Vincent Van Gogh Exhibit. It was a major show of 99% of all his works at two different museums: his paintings at the Van Gogh Museum in Amsterdam, and his sketches in the Kröller-Müller Museum in Otterlo. The exhibit, The Vincent Van Gogh Commemoration Year, ends July 31.

Their major airport, Schiphol, was so easy to pass through, compared to that nightmare called JFK in New York. We stayed at the Hotel Pulitzer on the Prinsengracht canal, a few hundred yards away from the Anne Frank House.

First Day covers of the exhibit were being sold by a collector/dealer right outside the Van Gogh Museum at twice the price of the Post Office on the Dam (Center of the City). Another vendor was selling a cinderella of the exhibit for 2 Guilders, about \$1.00. It featured 3 "stamps" with the word "Holland" under each picture. (I'll try to put a copy of it in next month's newsletter, which should be a slow news month for stamps.)

Every Wednesday and Saturday there is a stamp flea market in downtown Amsterdam, in a block behind the Palace, with more dealers than we had at WILKPEX '90. I could not believe how crowded the area got as the day went on. Last summer, while we were in London and Paris, I visited their stamp flea markets also; Amsterdam's was the biggest. Before visiting Europe I urge all stamp collectors to buy/borrow a book called "The Stamp Collector's Guide to Europe" written by Jon L. Allen and Paul H. Silverstone. Published by Arco Publishing Co., 219 Park Ave. South, New York, NY. 10003. I found it most informative.

Evian-les-Bains, the mineral water resort, to get some French stamps at a local p.o. It's about a 30 minute ride across Lake Geneva. The Swiss do a great job promoting stamps everywhere you look. The museum in Berne even had a small p.o. for kids where there were free post cards to be stamped "Kinder Post" by the tiny visitors themselves. WERE

Richard ended his letter with this information: "I had a chance in May to visit the Brier Hill, Pa. p.o. as part of Old Pike Days in Washington County. This p.o. is only open one day a year for this event. Poor quality cancel, but it was fun anyway. Clerk in costume and very helpful. New p.o. is a few hundred ft down the road. (route 40) They also had a pony express rider deliver the mail to Washington, Pa., but I missed it. I believe that same week-end, again too late for me, there was a special cancel for one of Pittsburgh's two inclines. Pity such news wasn't in the newsletter."

Thanks Richard for the letter. And, if anyone is ever aware of any special cancel in western Pa., or anywhere for that matter, please let me know about it so that it can be listed in this newsletter. Richard makes an excellent point. I have asked for help in filling these/this page(s), but....

Figure 1 below is a copy of the cinderella souvenir sheet I bought at the Van Gogh Museum last month. Actually, it was at the Rijksmuseum Kröller-Müller, at Otterlo.

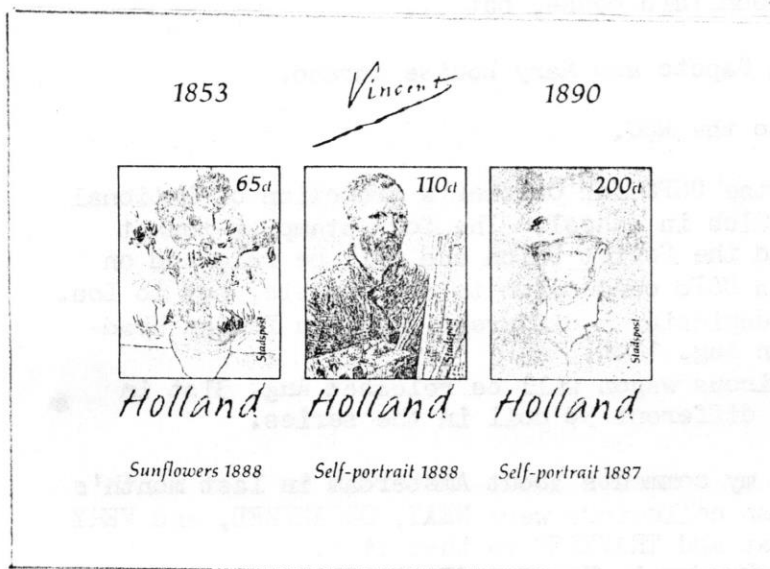


Figure 1



Figure 2



The plate blocks in figure 2 are difficult to locate. The original floating plate number strip of 20 has a face value of \$7.80. Retail prices of this strip currently range between \$14-\$20. See Linn's August 13th issue, p. 16 for complete details.

Finally, John Ross in the July 23rd issue of Linn's, p. 28 suggests that you buy the plate block of Scott # 902: 3¢ issue of Oct., 1940 showing Abe Lincoln freeing a slave. The stamp was issued to commemorate the 75th anniversary of the 13th Amendment to the U.S. Constitution, the amendment that abolished slavery. Chances are there are less than 50,000 of these plate blocks in collections today.

reject most fake or untagged stamps. The biggest tip-offs to these fakes is the perforations. The technology exists to allow a counterfeiter to do a convincing job. Color copiers are here to stay. Maybe the USPS should build new types of security into postage stamp production.

U.S. collectors: for the past four years fake Kansas-Nebraska overprints have been circulating the marketplace. See the chart and photos on the right. They are from the Aug. 20th issue of Linn's.

According to Les Winick in the Aug. 13th issue of Linn's, the front cover of the 1991 Scott Standard Postage Stamp Catalogue, Vol 1 is breaking the law.

The cover shows the Classic Mail Transportation block of four in normal size, in the issued colors, and without a diagonal line that would prevent misuse.

According to USPS regulations, full-color illustrations on uncanceled U.S. postage stamps must be 150% larger than the size of the issued product, or less than 75% of the size, but not the normal size.

NNNN

Kansas-Nebraska overprint fakes

Overall traits

1. Fake lettering appears thick and swollen; genuine usually looks proportional, even when badly printed.
2. Fakes have large periods; genuine periods are proportional to letters.
3. Fakes are less distinct at edges; genuine letters are better defined, even when broken.
4. Fake letters appear outlined; genuine letters appear solid.

Kansas

1. Genuine measures 9.0 to 9.3mm across; fake measures 9.5mm across.
2. The a and n on fake are joined, forming a slightly slanted image.
3. Base of K is longer on fake than on genuine.
4. Top of n is a gentle wave on fake; genuine n has a notch separating top serif from top loop.
5. Fake has rounded serif on s; genuine s has sharp serifs, particularly at left.
6. The loop of the a is smaller and more rounded.

Kans. Kans.

Fake

Genuine

Nebraska

1. Genuine measures 8.9 to 9.1mm across; fake measures 9.2 to 9.3mm across.
2. Fake has rounded N; genuine N is angular. Final leg of N has small bump.
3. The bottom curve of the e is much fatter on the fake.
4. Fake has fat, round r; genuine r is usually (not always) more sharply outlined.

Nebr.

Fake

Nebr.

Genuine

A chart showing various characteristics of the newest fake Kansas-Nebraska overprints.



This forgery would be the most valuable stamp of the 1929 Kansas-Nebraska overprinted set, with a Scott catalog value of \$45, if it were genuine. An expert would instantly have recognized this olive bister example as a fake, because the color of the stamp is wrong. A genuine 8c Kansas exists only in the olive green color variety. An unwitting novice, however, might be tempted to pay several dollars for this stamp, which sports a bogus overprint added to a common stamp with a catalog value of 5c.



Here the bogus Kansas overprint is shown above a genuine example. The counterfeit is too big, measuring 9.5mm across as against 9.0mm on the genuine stamp. The "a" and the "n" are connected, forming a slightly downward angle. Also, the period is too big on the fake, and the top of the "n" is missing the characteristic V-shaped notch separating the top loop from the serif that shows clearly on the genuine stamp. The boxed magenta Cayuga, N.Y., handstamp cancel could conceivably exist on a genuine Kansas overprint, but it isn't likely.

TRI-STATE STAMP DEALERS ASSN.
PRESENTS: PITTSBURGH'S
LARGEST & FINEST
DOWNTOWN STAMP SHOW
OCTOBER 27-28, 1990

AT THE NEW PITTSBURGH Y.M.C.A.
330 BLVD. OF THE ALLIES
SATURDAY - 10:00 AM THRU 5:00 PM
SUNDAY - 1:00 PM THRU 5:00 PM
FREE - DOOR PRIZES, ADMISSION &
APPRAISALS, FOR MORE INFORMATION
& AUCTION LISTING CALL:(412) 391-0744

Richard Melnick sends along the following information for fellow club members:
The OIL CREEK AND TITUSVILLE RAILROAD, in nearby Oil City, Pa., is the Only Operating Railway Post Office left in the U.S. Others exist, but they are "parked" at stations. This car is used on tours not only as a post office, but also has a snack bar and souvenirs for sale to the tourists. High school students work on the train and in the post office. They have no facilities for weighing the mail, so exact postage is necessary.

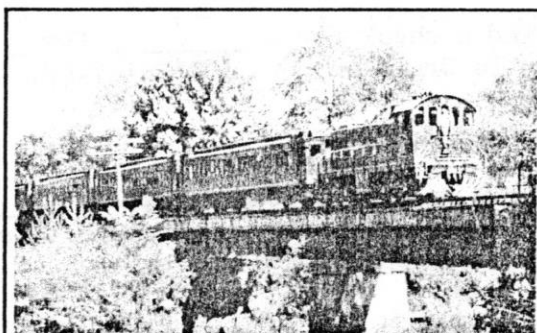
You can send items already stamped and they will cancel them. This can be done until late October, when the operation shuts down for the season. To send mail to them for special canceling on this railway car write to: OC&T RR., P.O.Box 68, Oil City, Pa. 16301.

A copy of their brochure is on the next page.

Don't forget PITTPEX: Nov3-4. Robert Morris College, Moon Township Campus, at the Charles L. Sewall Center, 1.5 miles northwest of Greater Pittsburgh Airport, Coraopolis.

OIL CREEK & TITUSVILLE RAILROAD

P.O. Box 68, Oil City, PA 16301



"through the valley that changed the world"

As with last year's contemporary Christmas stamp, this year's contemporary Christmas stamp will probably get two different Scott numbers.

The sheet stamps were printed by the American Bank Note Company and are perf 11 and are printed on soft paper that leaves visible paper fibers when the stamps are separated.

The booklet version was printed by the Bureau of Engraving and Printing. It measures perf 11½ and is printed on hard brittle paper that separates cleanly.

These stamps also differ in color somewhat: The background red color on the ABNC sheet stamp is brighter and appears more evenly applied than that of the BEP. The green color used for the word "Greetings" and the trim on the tree is more of a blue-green on the ABNC produced stamps. The violet ornaments are light colored on the ABNC stamps. The lettering appears thicker on the BEP version.

In Fig. 1 on the right, the sheet version, made by the ABNC is on the left, and the booklet version, made by the BEP, is on the right.



Differences between the sheet and booklet versions of the contemporary Christmas stamp includes perf measurements, paper types and color. The sheet stamps were produced by the American Bank Note Co., and the booklet stamps were printed by the Bureau of Engraving and Printing. Fig. 1.

Richard L. Lazorow had an interesting article on plate blocks on page 16 of the Oct. 8, 1990 issue of Linn's. In summation, he stated that plate blocks have been divided into three distinct groups with widely divergent values. The first group includes early plate blocks up through the 1930s. The second group included those issued between 1940-1980. The third group includes those printed since 1980.

Current prices of many in the first group do not reflect the difficulty of finding them in acceptable condition. These stamps are now more than 60 years old and are starting to show wear and tear from being in and out of many albums and auction houses.

Most plate blocks in the second group are selling close to face value that they can not go any lower. Because of the large supply of stamps in the second group, their value will not go up for a long time. Exceptions seem to be Scott numbers 834, 1053, C31, and a few of the 1940 Famous Americans.

The third group is the emerging group. No huge holdings of any from this period seem to exist, thus dealers are already paying premium prices. Nearly all floating plate number strips of 20 stamps are appreciating. C109-12, C117, 1861, 1863a, and 1867 plus many commemoratives are heading higher. The chart in Fig. 2, below, shows a few of the top performers.

| The top performers since 1981 | | |
|-------------------------------|------------|--------------|
| Scott No. | Face value | Retail price |
| 1622c 13c Flag..... | \$2.60 | \$70-80 |
| 1927 18c Alcoholism..... | \$3.60 | \$45-50 |
| O138 14c D Official..... | .56 | \$30-40 |
| J104 17c Postage Due..... | .68 | \$15-20 |
| 2111 22c D series..... | \$4.40 | \$15-20 |

This table shows some of the scarcest of modern plate blocks. Their prices indicate their relative scarcity. Fig. 2

NNNN

Stamps will have overall tagging or will be printed on prephosphored or phosphor-coated paper. This change in policy has already affected several stamps, including the \$1 Johns Hopkins stamp of the Great American series. These Hopkins stamps, printed on the BEP's A press, now exist with both block and overall tagging. Those with overall tagging appear slightly brighter to the naked eye than those with block tagging.

INQUIRING MINDS BEWARE: A souvenir sheet from Sierra Leone is being widely promoted by direct mail investment tipster Alan Feinstein. The stamp on the sheet shows a so called "Face on Mars," a mile wide configuration of rocks and shadows that is thought by New Age pseudoscientists to be the relic of an ancient civilization. See below.

The October issue of Feinstein's "Wealthmaker Quarterly Report" offers this space set for only \$135. One per customer, please. Soon, he says, this set will be worth over \$10,000 or more. Buyers beware. He is now promoting himself in a supermarket tabloid called Weekly World News. An article in it claims that an image similar to the Face on Mars has also been found beneath the Antarctic ice cap, and on Venus, Neptune, and the moon.

Season's Greetings. NNNN



FREE ADMITTANCE KEYSTONE FEDERATION STAMP SHOW

100 FRAME EXHIBIT • 27 DEALER BOURSE

ZEMBO MOSQUE TEMPLE
2801 N. 3rd Street
Harrisburg, PA 17110

MAY 24 - 25, 1991

Friday - 10:00 AM to 6:00 PM
Saturday - 10:00 AM to 5:00 PM

Sponsored by
Keystone Federation of Stamp Clubs

Special Show Cachet and Cancellation
U.S.P.S. Booth • Youth Area
Society/Club Meetings

FOR PROSPECTUS AND INFORMATION WRITE:
Federation Show
PO Box 85
Glen Rock, PA 17327

Incredible discovery revealed — in Antarctica!

STONE FACE FOUND UNDER POLAR ICE CAP

— & it's IDENTICAL to the image photographed on Mars in 1976!

German and American scientists have found a stone face under polar ice that's identical to the stone 'face' on Mars.

The mile-long monument also matches stone faces found on the moons, Venus and Neptune. And that suggests that the people or creatures who built them were capable of interplanetary travel over 500,000 years ago, when the images were made.

are believed to have been made by the same team of people who built the Stone Face on Mars, and who...
The discovery...
Dr. Lewis
Dr. Hansen

Sweden has best hobbies

Women looking for a hobby? Sweden has the best hobbies in the world. They're called 'hobbies' and they're found in Sweden. A recent survey of 1,000 Swedes found that the most popular hobby was 'hobbies'.

35

it as the "Flower" stamp. They think that TV comedians like Johnny Carson, Jay Leno, and David Letterman who have many fans, will make fun of it and refer to it as the "F is for Failure" stamp.

The new rate increase, whatever it will be, will go into effect on Sunday, Feb. 3.

The design for a ten subject U.S. sheetlet commemorating World War II events of 1941 was unveiled at the White House late last month. Each sheetlet will contain 10 stamps, separated by a large gutter reproducing a large map. Two of these sheetlets will appear on a standardized post office pane, creating a se-tenant block of 10 where they meet. This will be the first of five such sheets to be released over the next five years, with a total of 50 stamp designs to commemorate the major events of WW II. (See copy from Linn's below.) Bear in mind that these sheetlets will not be issued in conjunction with a major national or international stamp show, as all previous U.S. souvenir sheets have been.

NNNN.



Shown here is the first of five scheduled U.S. sheetlets marking events in World War II. Two sheetlets make up a post office pane, creating a se-tenant block of 10 stamps where they meet. The essay stamps shown here bear a "00" denomination.