



APS CHAPTER #122934



WWW.WILKINSBURGSTAMPCLUB.COM

EARLY ISSUES FOR 2016

QUILLED PAPER HEART

(FIRST DAY OF ISSUE WAS JANUARY 12)

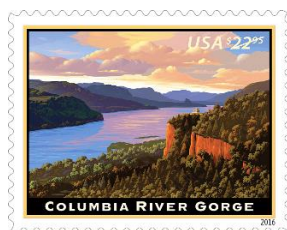
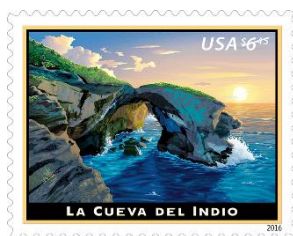
The stamp features a heart that was created using the ancient art of quilling. Quilling involves rolling and shaping narrow strips of paper, laying them on their edges, and gluing them in place to form intricate designs. The heart shape in the center of the stamp art is made from paper strips of many colors and is surrounded by white paper swirls on a white background.



\$6.45 PRIORITY MAIL & \$22.95 PRIORITY EXPRESS MAIL STAMPS (FIRST DAYS OF ISSUE WERE JANUARY 17 BOTH ISSUES)

The new Priority Mail stamp features one of Puerto Rico's many magical and mysterious caves. The stamp art depicts a sunset view of La Cueva del Indio, or the Cave of the Indian, which is located near Arecibo on Puerto Rico's north coast. The cave gets its name from the great number of engravings, known as petroglyphs, found on its walls.

The new Express Mail stamp depicts the grandeur of the Columbia River Gorge. Approximately 80 miles long and up to 4,000 feet deep, the gorge runs along the Columbia River, which forms part of the border between Oregon and Washington.



RICHARD ALLEN FOREVER STAMP BLACK HERITAGE

(FIRST DAY OF ISSUE IS FEBRUARY 2)

Born February 14, 1760, Allen was a preacher, activist, and civic leader. This stamp coincides with the 200th anniversary of Allen's founding of the African Methodist Episcopal Church, one of the most important institutions in African-American life, and his election as its first bishop. The stamp art is a portrait of Allen, a detail from an 1876 print titled "Bishops of the A.M.E. Church." Featuring Allen in the center surrounded by ten other bishops and six historical vignettes, the full print is from the collection of the Library Company of Philadelphia. The stamp will be issued at the Mother Bethel A.M.E. Church.



LUNAR NEW YEAR: YEAR OF THE MONKEE (FIRST DAY OF ISSUE IS FEBRUARY 5)

New York artist Kim Mak once again brings us a design that features a traditional form of Lunar New Year celebration. The stamp art features two bright reddish-orange peonies against a purple background. Peonies symbolize wealth and honor in Chinese culture and often decorate the sides of the traditional drums played during the holiday festivities. The stamp design incorporates two elements from the previous series of Lunar New Year stamps: the intricate cut-paper design of a monkey and the Chinese character for "monkey," drawn in grass-style calligraphy.



WILKINSBURG STAMP CLUB - FEBRUARY, 2016

OFFICERS / ADDRESS / WHEN WE MEET

President: Andy Novotny
(email: novoand@hotmail.com)

Vice-President: Laura Kaczynski
(email: laurakac13@verizon.net)

Secretary: Tom Reiff **Treasurer:** Danielle Weaver

MAILING ADDRESS: Wilkinsburg Stamp Club
P.O. Box 10552
Pittsburgh, PA 15235-0552

We meet on the second and fourth Sunday (except holidays and fourth Sunday in June, July and August) of each month. Meetings are from 12:30 P.M. until close of business, with the business meeting at 2:00 P.M. Meeting at the Churchill Borough Building, 2300 William Penn Hwy, Churchill, PA 15235.

DUES ARE ONLY \$8.00 PER YEAR (JULY-JUNE)

Newsletter Editor: Tom Reiff
(email: treiffer@msn.com)

Mailing Coordinator: Eugene Bujdos
(email: gbujdos@yahoo.com)

THE EDITOR WRITES...

My show exhibit is almost ready to go.
How about yours?
I always look forward to seeing the really nice exhibits that
our members display.

FEBRUARY, 2016 MEETING DATES

February 14th and February 28th
On February 28th we will have "SHOW and TELL" before
the meeting. Bring one of your "favorites."
***** PLEASE JOIN US *****



**VALENTINE'S DAY
(2002 ROMANIA – Scott #4503)**

This newsletter is published ten times per year. Eight issues are published monthly for the months of January, February, March, April, September, October, November and December. For the months of May through August, two issues are published, one for the months of MAY-JUNE and one for the months of JULY-AUGUST.

**** OUR FISCAL YEAR IS JULY 1 – JUNE 30 ****

CLUB NEWS

OFFICER NOMINATIONS: Nominations for office of President and Secretary will be held at the February 14th and 28th meetings. All regular members, in good standing, shall be permitted to be nominated. A second will not be required. Term of office is from July 1, 2016 through June 30, 2018.

STATE OF THE CLUB: The Club currently has 75 members from 10 different states. Regrettably five (5) members were dropped from the membership for non-payment of dues.

WILKPEX 2016 UPDATE – APRIL 9 & 10

Dealers: Danielle Weaver, Bourse Chair, reported at the January 10th meeting that we currently have 11 dealers using 19 tables. No more dealer space is available.

Cachet & Cancel: After much correspondence, telephone calls, etc. trying to get Mike Ditka, Troy Polamalu and then Lynn Swann without success, Gene Bujdos reports that the cachet and cancel will be for Pittsburgh Steelers great Robert Patrick "Rocky" Bleier. THANKS GENE!

Souvenir Sheet: Tom Reiff reports that the souvenir sheet is ready to be printed.

Exhibits: We have seven (7) members committed to exhibit: David Albert (1 exhibit), Bill Badali (2 exhibits), Eugene Bujdos (1 exhibit), Laura Kaczynski (1 exhibit), Tom Reiff (1 exhibit), Lorraine Vincent (2 exhibits) and Danielle Weaver (1 exhibit). These members exhibiting, we have filled all 14 frames. We still have six (6) open frames to be filled. PLEASE CONSIDER EXHIBITING. THANKS!

Advertising: Tom Donohue continues to pursue additional areas to advertise. The show ad is currently (or soon to be) in the APS American Philatelist magazine. Tom Reiff will prepare and get copies made of our show fliers and postcards for mailing.

PAGE 3 - WILKINSBURG STAMP CLUB – FEBRUARY, 2016

COLLECTING FEBRUARY 29 (LEAP DAY) STAMPS AND POSTAL HISTORY by Tom Reiff

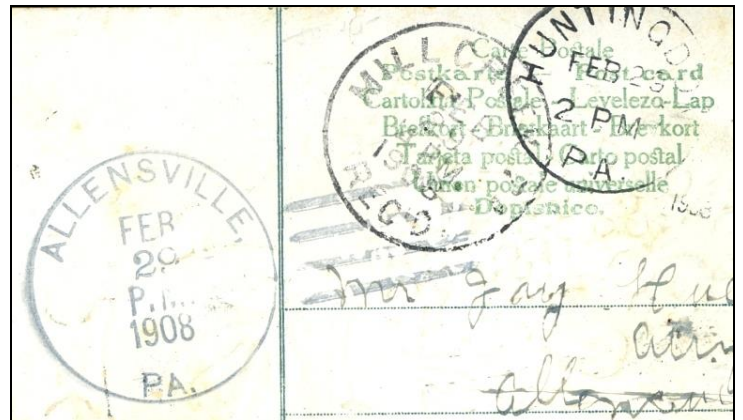
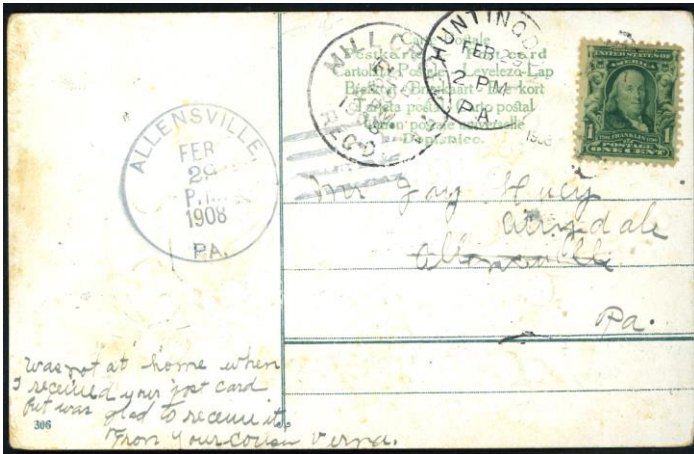
Here we are in February, 2016, another Leap Year. February 29, also known as the leap day of the Gregorian calendar, is a date that occurs in most years that are divisible by 4, such as 2008, 2012, 2016, 2020 and 2024. Years that are divisible by 100, but not by 400, do not contain a leap day. Thus, 1700, 1800, and 1900 did not contain a leap day, 2100, 2200 and 2300 will not contain a leap day, while 1600 and 2000 did, and 2400 will. Years containing a leap day are called leap years. February 29 is the 60th day of the Gregorian calendar in such a year, with 306 days remaining until the end of the year.

COLLECTING THE FEBRUARY 29 LEAP DAY DATE ON STAMPS AND POSTMARKS

The 29th of February occurs once every four years, making collecting this material more difficult than other dates. However, it does offer variety in collecting material, including covers, post cards, postmarks, events occurring on the 29th and people born or died on February 29th. The world's first stamp, for example, the Penny Black, was issued in May 1840. Therefore it would not be possible to collect a February 29 postmark until 1844.

Earlier postmarks, in most cases, did not contain the year, making quite difficult to "complete" a collection of the 43 February 29 postmarks from 1844 through this year of 2016. Sometimes you can figure out the "missing year" depending on the stamp issue date. Easiest examples to find are FDC and other philatelic/contrived covers commemorating this date. Commercial postal history (covers and postcards) are a bit harder to find and the most difficult are stamps with this date on the postmark, especially with the year. Other "go with" items include documents, and ephemera with this date either pre-printed, rubber stamped or hand-written.

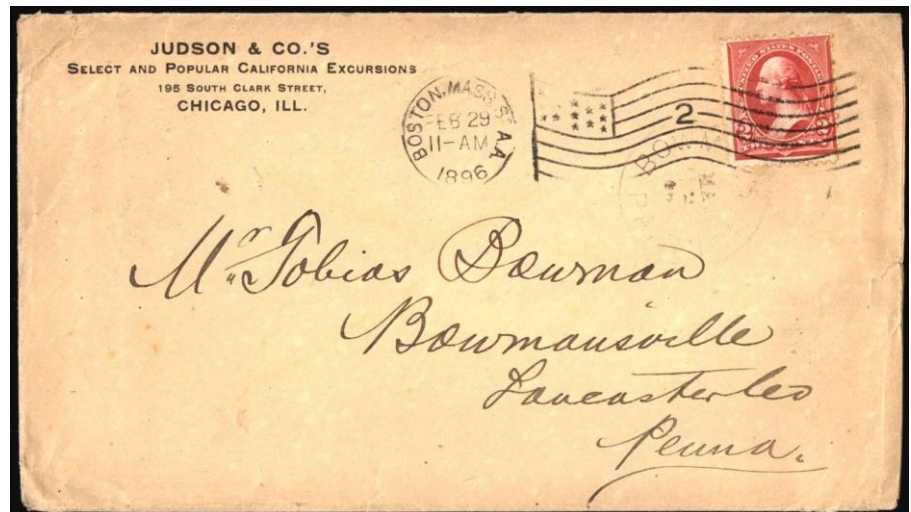
HERE ARE SOME EXAMPLES WITH THE FEBRUARY 29 POSTMARK.



MOST LIKELY ONE-OF-KIND "FORWARDED" POSTCARD WITH THREE FEBRUARY 29, 1908 POSTMARKS FROM THREE DIFFERENT TOWNS IN PENNSYLVANIA; HUNTINGDON, ALLENSVILLE AND MILL CREEK (REC'D)



**1888 - TRINIDAD – FE 29 88
(THE 8'S ARE INVERTED)**



**COMMERCIAL COVER POSTMARKED FEB 29 1896
FROM JUDSON & CO., CALIFORNIA EXCURSIONS TO BOWMANVILLE, PA**

WILKINSBURG STAMP CLUB – FEBRUARY, 2016

MARK YOUR CALENDARS

Upcoming
Stamp, Postcard and Collectible Shows

STAMP SHOW – February 14 – **HUDSON, OHIO** - Hudson Stamp Bourse Lincolnway Stamps, Clarion Inn, 6625 Dean Memorial Parkway. Sunday 10AM – 4PM

STAMP SHOW – March 6 - **PITTSBURGH, PA** - K2 Collectibles (Kevin Kellman) – Masonic Temple (Hall), Lower Level, 9521 Saltsburg Road, Plum Boro, PA 15239. Sunday 10AM – 4PM

STAMP SHOW - March 7-8 - **NORTH CANTON, OHIO** - McKinley Stamp Show McKinley Stamp Club, St. George Serbian Orthodox Social Hall, 4667 Applegrove St., NW Saturday 10AM – 5PM; Sunday 10AM – 4PM

STAMP SHOW – March 10-12 – **CLEVELAND, OHIO** – Garfield Perry March Party – 126th Annual Stamp Exhibition & Bourse. La Villa Conference and Banquet Center, 11500 Brookpark Road, Cleveland, Ohio 44130. Thursday 11AM – 6PM, Friday 10AM – 5:30PM, Saturday 10AM – 4PM

POSTCARD SHOW – March 25-26 – **LANCASTER, PA** - Lancaster Spring Postcard Show (Morlatton show), Farm & Home Center, 1383 Arcadia Rd., Friday 10AM - 6PM, Saturday 10AM - 4PM Admission charged.

POSTCARD & PAPER SHOW – April 2 – **PITTSBURGH, PA** - Three Rivers Postcard Club, Fairhaven United Methodist Church, 2415 Saw Mill Run Blvd. (Route 51), Pittsburgh, PA 15234. Saturday, 9AM – 4PM. Admission \$2.00

STAMP SHOW – April 9-10 – **MONROEVILLE, PA** - WILKPEX Wilkinsburg Stamp Club, Gateway Firehall, 4370 Northern Pike, Monroeville, Pennsylvania 15146. Saturday 10AM – 4PM; Sunday 10AM – 3PM Special Cachet, Special Cancel. Admission FREE

STAMP SHOW – May 6-7 – **BUTLER, PA** – BUTLERPEX Butler County Philatelic Society, Tanglewood Senior Center, 10 Austin Avenue, Lyndora, PA. Friday 10AM – 5PM; Saturday 10AM – 4PM Admission FREE

ATTEND A SHOW – FIND A TREASURE

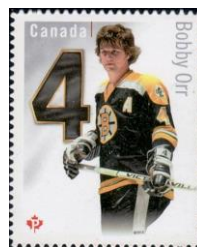
PITTSBURGH AREA STAMP CLUB WEBSITES

Here are some interesting Internet Web Sites. Once you access this URL, you may be able to navigate to other parts of the web site.

WESTMORELAND COUNTY PHILATELIC SOCIETY
<http://www.muleshoepa.com/WCPS/WCPS.HTM>

PHILATELIC SOCIETY OF PITTSBURGH
<http://www.presidentdrive.com>

50 YEARS AGO – FEBRUARY 1966



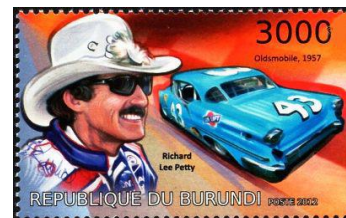
**2014 CANADA
(BOBBY ORR)**



**2015 CONGO REP
(WILT CHAMBERLAIN)**



**1966 RUSSIA
(SPACE DOGS)**



2012 BURUNDI (PETTY)

**HISTORICAL FACTS WITH PHILATELIC CONNECTIONS
OVER THE YEARS, STAMPS HAVE BEEN ISSUED FOR
HOCKEY, WILT CHAMERLAIN (BASKETBALL), SPACE
PROGRAM AND RICHARD PETTY (AUTOMOBILE RACING)**

FEBRUARY 9, 1966 - The National Hockey League voted to admit six expansion franchises, out of 18 candidates, for the 1966-1967 season, doubling the NHL's size. The existing teams in Boston, Chicago, Detroit, Montreal, New York, Toronto, would be joined by clubs at Los Angeles, Minnesota, Philadelphia, Pittsburgh, St. Louis and San Francisco.

FEBRUARY 14, 1966 – Wilt Chamberlain breaks NBA career scoring record at 20,884 points.

FEBRUARY 22, 1966 - The Soviet Union launched two dogs, Veterok and Ugolyok, into orbit around the Earth on board the satellite Kosmos 110. The two dogs would remain in orbit for 22 days and then safely return to Earth on March 16

FEBRUARY 27, 1966 - 8th Daytona 500: Richard Petty wins (160.927 MPH)