



APS CHAPTER #122934




WWW.WILKINSBURGSTAMPCLUB.COM

WILKPEX '15
 Wilkinsburg Stamp Club
salutes... Pittsburgh's

Kent Tekulve
 Rubber Band Man

April 18, 2015

Exhibition Station
 Monroeville, PA 15146




Kent Tekulve ⁽²⁷⁾

Born in Cincinnati, Ohio in 1947, the Pirate Pitcher saved 158 games with Pittsburgh, pitching 1,071 innings. This All-Star reliever had 3 saves in the '79 World Series with Baltimore. Amazingly he pitched in 90 games or more 3 times and pitched a 9 game streak in 1987. **WILKPEX 2015 Pittsburgh, PA 15235-0552.**

2015 EXHIBITION SOUVENIR - APRIL 18, 19
"DIVORCE CAKE/BROKEN HEART ISSUE (WHY NOT!)"

I NEVER WANT TO SEE YOU AGAIN!



HER CAKE THEIR HEARTS? HIS CAKE

"SOME THINGS JUST DON'T LAST FOREVER"

THEN DON'T TURN AROUND!

Wilkinsburg Stamp Club P.O. Box 10552 Pittsburgh, PA 15235-0552

ABOVE IS A "PREVIEW" OF OUR 2015 WILKPEX CANCEL, CACHET AND SOUVENIR SHEET. THERE IS A CANCEL FOR BOTH SATURDAY, APRIL 18, 2015 (PICTURED) AND SUNDAY, APRIL 19, 2015

WILKINSBURG STAMP CLUB - APRIL, 2015

OFFICERS / ADDRESS / WHEN WE MEET

President: Andy Novotny
(email: novoand@hotmail.com)

Vice-President: Laura Kaczynski
(email: laurakac13@verizon.net)

Secretary: Tom Reiff **Treasurer:** Danielle Weaver

MAILING ADDRESS: Wilkinsburg Stamp Club
P.O. Box 10552
Pittsburgh, PA 15235-0552

We meet on the second and fourth Sunday (except holidays and fourth Sunday in June, July and August) of each month. Meetings are from 12:30 P.M. until close of business, with the business meeting at 2:00 P.M. Meeting at the Churchill Borough Building, 2300 William Penn Hwy, Churchill, PA 15235.

DUES ARE ONLY \$8.00 PER YEAR (JULY-JUNE)

Newsletter Editor: Tom Reiff
(email: treiffer@msn.com)

Mailing Coordinator: Eugene Bujdos
(email: gbujdos@yahoo.com)

THE EDITOR WRITES...

Our annual exhibition and bourse is this month. Please try to attend to find some items to add to your collection(s). It will be fun!

APRIL, 2015 MEETING DATES

April 12th and April 26th
On April 26th we will have "SHOW and TELL" before the meeting. Bring one of your "favorites."
******* PLEASE JOIN US *******



EASTER SEALS

(1934 USA - 1st YEAR, 1951 VENEZUELA,
1958 USA - 2 DESIGNS)

This newsletter is published ten times per year. Eight issues are published monthly for the months of January, February, March, April, September, October, November and December. For the months of May through August, two issues are published, one for the months of MAY-JUNE and one for the months of JULY-AUGUST.

**** OUR FISCAL YEAR IS JULY 1 – JUNE 30 ****

CLUB NEWS

OFFICER ELECTIONS: Elections for office of Vice-President and Treasurer were held at the March 8th meeting. We are happy to report that Laura Kaczynski was re-elected Vice-President and Danielle Weaver was re-elected Treasurer. Because there were no other nominations, they were both elected by acclamation. CONGRATULATIONS!

WILKPEX 2015 UPDATE – APRIL 18 & 19

Dealers: We currently have 11 dealers using 19 tables. This is the maximum number of tables that was can accommodate.

Cachet & Cancel: Both the cachet and cancel are complete and ready for the show. As stated in previous newsletters, this year is former Pittsburgh Pirates pitching great, Kent Tekulvel.

Souvenir Sheet: This year's souvenir sheet is "spoofing" the wedding cake stamps with divorce cake stamps and a "broken heart" stamp. It has been printed and will be available at the show.

Exhibits: We currently have four members who will be exhibiting and will fill 20 frames. Two exhibitors have two exhibits.

Advertising: The show ad has been in the last several issues of the APS Journal. Linn's Stamp News has and will have show advertising. Members also took advertising fliers to distribute at various local places and newspapers, etc.

Advance Mailing: The advance mailing postcards are ready to go and will be mailed on April 6th.

FIRST PONY EXPRESS MAIL – APRIL 3, 1860

The *Pony Express* was a mail service delivering messages, newspapers, mail, and small packages from St. Joseph, Missouri, across the Great Plains, over the Rocky Mountains and the Sierra Nevada to Sacramento, California, by horseback, using a series of relay stations. During its 18 months of operation, it reduced the time for messages to travel between the Atlantic and Pacific coasts to about 10 days. From April 3, 1860, to October 1861, it became the West's most direct means of east-west communication before the telegraph was established and was vital for tying the new state of California with the rest of the country.

In 1860, there were about 157 Pony Express stations that were about 10 miles apart along the Pony Express route. This was roughly the distance a horse could travel at a gallop before tiring. At each station stop the express rider would change to a fresh horse, taking only the mail pouch called a *mochila* (from the Spanish for pouch or backpack) with him.

FIRST JOURNEY'S

The first **Westbound** Pony Express trip left St. Joseph on April 3, 1860 and arrived ten days later in San Francisco, California, on April 14. These letters were sent under cover from the East to St. Joseph, and never directly entered the U.S. mail system. To this day there is only a single letter known to exist from the inaugural westbound trip from St. Joseph, Missouri to San Francisco, California.

The messenger delivering the *mochila* from New York and Washington, DC, missed a connection in Detroit and arrived in Hannibal, Missouri, two hours late. The railroad cleared the track and dispatched a special locomotive called *Missouri* with a one-car train to make the 206 miles trek across the state in a record 4 hours 51 minutes, an average of 40 miles per hour. It arrived at Olive and 8th Street, a few blocks from the company's new headquarters in a hotel at Patee House at 12th Street and Pennsylvania and the company's nearby stables on Pennsylvania. The first pouch contained 49 letters, five private telegrams, and some papers for San Francisco and intermediate points. St. Joseph Mayor, M. Jeff Thompson, William H. Russell and Alexander Majors gave speeches before the *mochila* was handed off. The ride began at about 7:15 p.m. The *St. Joseph Gazette* was the only newspaper included in the bag.

The identity of the first rider has long been in dispute. The *St. Joseph Weekly West* (April 4, 1860) reported Johnson William Richardson was the first rider. Johnny Fry is credited in some sources as the rider. Nonetheless, the first westbound rider carried the pouch across the Missouri River ferry to Elwood, Kansas. The first horse-ridden leg of the Express was only about a 1/2-mile from the Express stables/railroad area to the Missouri River ferry at the foot of Jules Street. Reports indicated that horse and rider crossed the river. In later rides, the courier crossed the river without a horse and picked up his mount at a stable on the other side. The first westbound *mochila* reached its destination, San Francisco, on April 14, at 1:00 AM.

The first **Eastbound** Pony Express trip left San Francisco, California, on April 3, 1860 and arrived at its destination some ten days later in St. Joseph, Missouri. From St. Joseph, letters were placed in the U.S. mails for delivery to eastern destinations. There are only two letters known to exist from the inaugural eastbound trip from San Francisco to St. Joseph.

BELOW ARE SOME STAMP IMAGES FOR AND COMMEMORATING THE PONY EXPRESS AND A PHOTO OF WILLIAM FREDERICK "BUFFALO BILL" CODY, A PONY EXPRESS RIDER AT AGE 15 (PHOTO IS CODY AT AGE 19)

1861



Scott #143L3

1869



Scott #113

1940



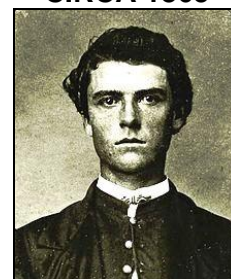
Scott #894

1960



Scott #1154

CIRCA 1865



WILLIAM F. CODY

WILKINSBURG STAMP CLUB – APRIL, 2015**MARK YOUR CALENDARS**

Upcoming
Stamp, Postcard and Collectible Shows

ANTIQUE & COLLECTIBLE SHOW – Castle Shannon Fire Hall, **CASTLE SHANNON, PA** - April 12. 8AM – 3PM FREE

POSTCARD & PAPER SHOW – April 11 – **PITTSBURGH, PA** - Three Rivers Postcard Club, Fairhaven United Methodist Church, 2415 Saw Mill Run Blvd. (Route 51), Pittsburgh, PA 15234. 9AM – 4PM Admission \$2.00

STAMP SHOW – April 18-19 – **MONROEVILLE, PA** - WILKPEX Wilkinsburg Stamp Club, Gateway Firehall, 4370 Northern Pike, Monroeville, Pennsylvania 15146. Saturday 10AM – 4PM; Sunday 10AM – 3PM Special Cachet, Special Cancel. Admission FREE

STAMP SHOW – May 8-9 – **BUTLER, PA** – BUTLERPEX Butler County Philatelic Society, Tanglewood Senior Center, 10 Austin Avenue, Lyndora, PA Friday 10AM – 5PM; Saturday 10AM – 5PM Admission FREE

STAMP SHOW – May 15 – 17 **ROCHESTER, NY** – ROPEX - The Greater Canandaigua Civic Center, 250 North Bloomfield Rd, Canandaigua, New York 14424 Friday/Saturday Daily Admission \$2; Sunday FREE; RPA Members and Youth under 18 Free. Friday 11-6, Saturday 10-5, Sunday 10-3.

STAMP SHOW – June 12 -14 – **COLUMBUS, OHIO** - COLOPEX 2015 – Rhodes Center, Ohio Expo Center, 717 East 17th Avenue Columbus, Ohio. Fri 10AM – 6PM, Sat 10AM – 6PM, Sun 10AM – 3PM.

STAMP SHOW – June 28 – **CRANBERRY, PA**, Double Tree Hilton (formerly Four Points Sheraton), Cranberry, PA 10AM – 4PM FREE
NOTE: Remaining 2015 Cranberry Stamp Shows are September 20 and December 6.

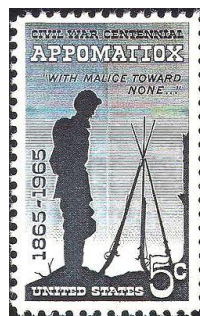
And don't forget, during the year, weather permitting, Trader Jack's Flea Market (every Sat-Sun), Hannastown (MAY-SEP 2nd Sunday), Bull Creek (MAY-OCT 3rd Sunday), Washington Antiques Fair (Consol Energy Park – Last Sunday of the month), etc.

ATTEND A SHOW – FIND A TREASURE**PITTSBURGH AREA STAMP CLUB WEBSITES**

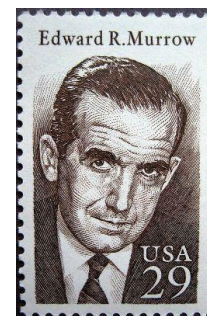
Here are some interesting Internet Web Sites. Once you access this URL, you may be able to navigate to other parts of the web site.

WESTMORELAND COUNTY PHILATELIC SOCIETY
<http://www.muleshoepa.com/WCPS/WCPS.HTM>

PHILATELIC SOCIETY OF PITTSBURGH
<http://www.presidentdrive.com>

50 YEARS AGO – APRIL 1965

1965 USA – CIVIL WAR



1994 USA - MURROW



1965 CHINA – WORLD'S FAIR



1965 - DOMINICAN REPUBLIC

HISTORICAL FACTS WITH PHILATELIC CONNECTIONS OVER THE YEARS, STAMPS HAVE BEEN ISSUED FOR THE CIVIL WAR, THE NY WORLD'S FAIR, DOMINICAN REPUBLIC AND EDWARD R. MURROW

APRIL 9, 1965 - The 100th anniversary of the end of the American Civil War is observed

APRIL 21, 1965 – The NY World's Fair in Flushing Meadows, New York, US, reopens for its second six-month season.

APRIL 24, 1965 - The Dominican Civil War, better known as Guerra de Abril, took place between April 24, 1965, and September 3, 1965, in Santo Domingo, Dominican Republic. It was the bloodiest armed conflict in the Dominican Republic in the twentieth century. **NOTE: IN SEARCHING THE SCOTT CATALOGUE, I COULD FIND “NO STAMPS” ISSUED FOR THE DOMINICAN REPUBLIC DURING THIS CIVIL WAR.**

APRIL 27, 1965 - Edward R Murrow, 57, US journalist and former director of the United States Information Agency dies of lung cancer.